



BRADFORD WHITE[®]
W A T E R H E A T E R S

REPLACEMENT PARTS LIST
ECOSTOR™ SERIES
SOLAR INDIRECT SYSTEM



EcoStor™ SC Indirect
Single Coil
Electric Backup

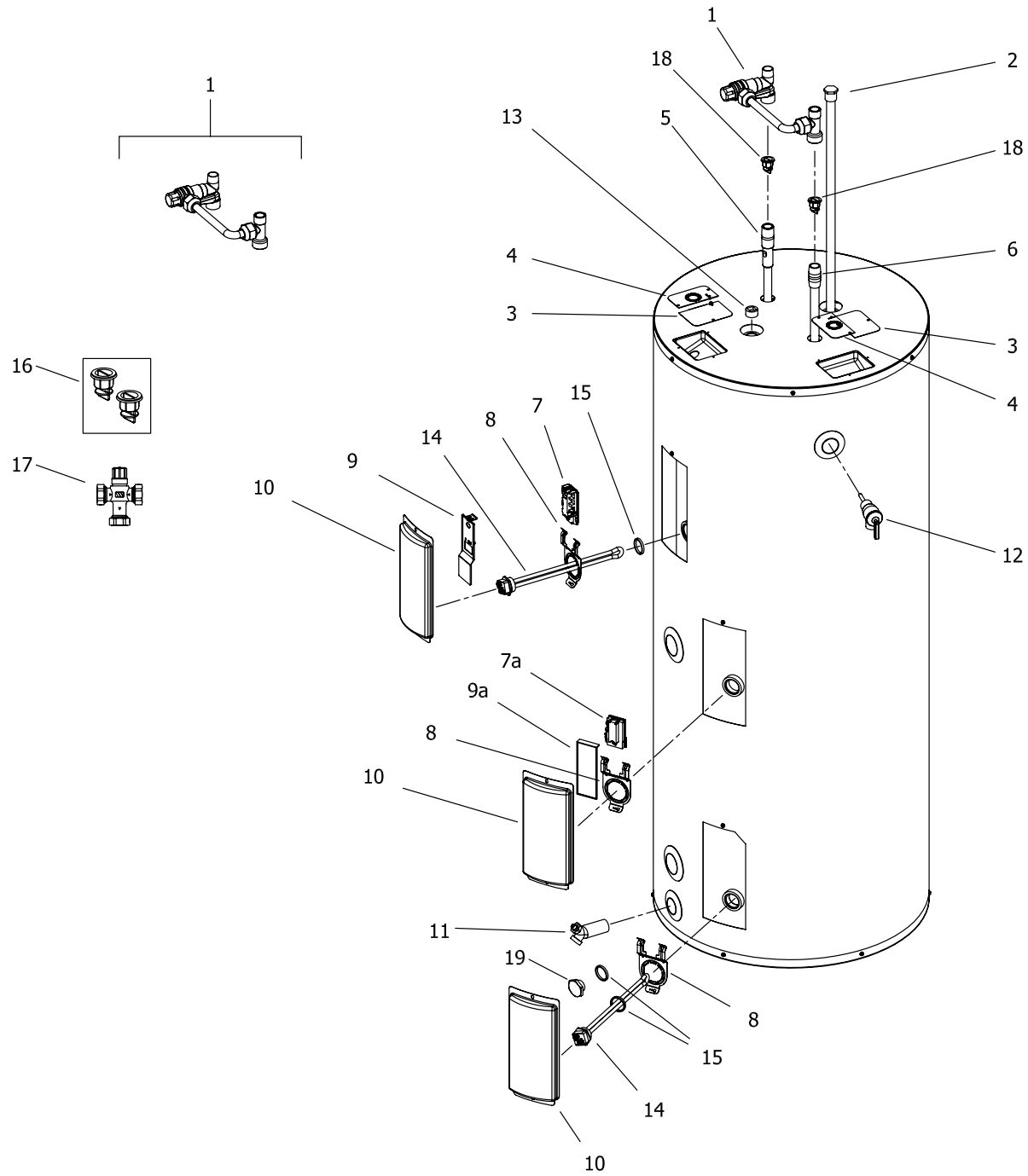


EcoStor™ SD Indirect
Dual Coil
Heat Exchanger Backup

Effective: October 1, 2008
ECO 7339

**NOTE: BOTH MODEL AND SERIAL
NUMBERS ARE REQUIRED FOR
ORDERING REPLACEMENT PARTS**

Dimensions and specifications
subject to change without notice.



Item	Description	Model	Model	Model	Model	Model	Model
		S(SW,DW)260R*(D,S)S	S(SW,DW)275R*(D,S)S	S(SW,DW)2115R*(D,S)S	SDCDW255R*SW	SDCDW270R*SW	SDCDW2110R*SW
1	Kit Integrated Mixing Device (The Optimizer)	239-46225-02	239-46225-02	239-46225-02	239-46225-02	239-46225-02	239-46225-02
2	Anode-Hex Plug type (Aluminum)	224-38508-07	224-38508-07	224-38508-07	224-38508-07	224-38508-07	224-38508-07
3	Cover Junction Box	243-39452-00	243-39452-00	243-39452-00	243-39452-00	243-39452-00	243-39452-00
4	Cover Conduit/Ground	243-39451-00	243-39451-00	243-39451-00	243-39451-00	243-39451-00	243-39451-00
5	Hot Water Outlet Anode (Aluminum)	224-32999-07	224-32999-07	224-32999-13	224-32999-07	224-32999-07	224-32999-13
6	Cold Water Inlet Dip Tube (Polysulfone)	229-39628-10	229-39628-10	229-39628-16	229-39628-10	229-39628-10	229-39628-16
7	Thermostat with High Limit ▲	265-46281-00	265-46281-00	265-46281-00	265-46281-00	265-46281-00	265-46281-00
7a	Thermostat (Dual Element Only)▲	265-46279-00	265-46279-00	265-46279-00	---	---	---
8	Thermostat Mounting Bracket	239-44479-00	239-44479-00	239-44479-00	239-44479-00	239-44479-00	239-44479-00
9	Thermostat Protector (Large) ♦	223-40399-00	223-40399-00	223-40399-00	223-40399-00	223-40399-00	223-40399-00
9a	Thermostat Protector (Small)♦♦	223-46286-00	223-46286-00	223-46286-00	---	---	---
10	Access Cover	243-36618-02	243-36618-02	243-36618-02	243-36618-02	243-36618-02	243-36618-02
11	Brass Drain Valve	265-42351-02	265-42351-02	265-42351-02	265-42351-02	265-42351-02	265-42351-02
12	T&P Relief Valve	230-40594-02	230-40594-02	230-40594-02	230-40594-02	230-40594-02	230-40594-02
13	3/4 NPT Plug	239-11638-00	239-11638-00	---	---	---	---
14	Heating Element Incoloy 240V/4500W	220-42545-16	220-42545-16	220-42545-16	---	---	---
	Heating Element Incoloy 240V/5500W	220-42545-17	220-42545-17	220-42545-17	---	---	---
15	Element Gasket	223-34019-00	223-34019-00	223-34019-00	223-34019-00	223-34019-00	223-34019-00
16	Kit-Heat Trap Insert	265-45420-00	265-45420-00	265-45420-00	265-45420-00	265-45420-00	265-45420-00
17	ASSE Approved Mixing Device (Optional)	239-43740-01	239-43740-01	239-43740-01	239-43740-01	239-43740-01	239-43740-01
18	Heat Trap Insert (Inlet & Outlet)	239-45167-00	239-45167-00	239-45167-00	239-45167-00	239-45167-00	239-45167-00
19	Element Plug (Single Element Only)	223-34020-00	223-34020-00	223-34020-00	---	---	---

* All Warranties

♦ For use with item 7.

♦♦ For use with item 7a.

▲ Thermostat protector provided with thermostat.



BRADFORD WHITE®

W A T E R H E A T E R S

Ambler, PA

For U.S. and Canada field service,
contact your professional installer or
local Bradford White sales representative.

Sales/800-523-2931
Fax/215-641-1670
Parts Fax/215-641-2180

Technical Support/800-334-3393
Fax/269-795-1089

Warranty/800-531-2111
Fax/269-795-1089

International:
Telephone/215-641-9400
Telefax/215-641-9750



BRADFORD WHITE-CANADA® INC.

Mississauga, ON

Sales/866-690-0961
905-238-0100

Fax/905-238-0105

Technical Support/800-334-3393

Email

parts@bradfordwhite.com
techserv@bradfordwhite.com

www.bradfordwhite.com