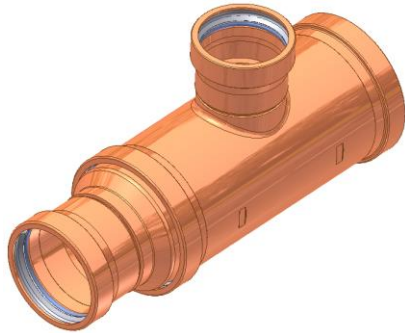


SUBMITTAL SHEET

811-R Large-Small Diameter Series

APOLLOXPRESS® Press End Copper Tee
Reducer Run-Outlet CxCxC
(2" x 1½" x 2½" through 4" x 3" x 4")



Job Name:	
Job Location:	
Engineer:	
Contractor:	
Tag:	
PO Number:	
Representative:	
Wholesale Distributor:	



DESCRIPTION

The APOLLOXPRESS® 811-R Large-Small Diameter Press Reducing Run-Outlet Tee features a Lead-Free dezincification resistant copper body, a patented stainless-steel solid cross-section Grab Ring, a Nylon Separation Ring and an EPDM O-Ring. Our Large Diameter APOLLOXPRESS® products are manufactured utilizing proven ASTM materials and standards. Proudly Made In The

FEATURES

- Lead-Free Construction
- Leak-Before-Press Technology
- Visual element, Break Away Band (Pat. Pending)
- Compatible with XL-C™ & Pro-press™ Pressing Tools
- Approved for underground installation (per local installation code)
- Use with hard/soft ASTM B88 K, L & M Copper Tube
- Made in USA
- cUPC® Compliant
- ARRA Compliant

PERFORMANCE RATING

- Maximum Pressure: 200 psi
- Temperature Range: 0°F to 250°F depending on application. Hot Water up to 250°F, Chilled Water down to 33°F

APPROVALS

- NSF/ANSI NSF 61 – Water Quality
- NSF/ANSI NSF-372 – Lead Free (LF)
- IAPMO File Listings: 4861, 6174 & N-4951

APOLLOXPRESS

- Large Diameter Sizes 2" x 1½" x 2½" through 4" x 3" x 4"
- Model 811-R, Reducing Outlet-Run Tee CxCxC

STANDARD MATERIALS

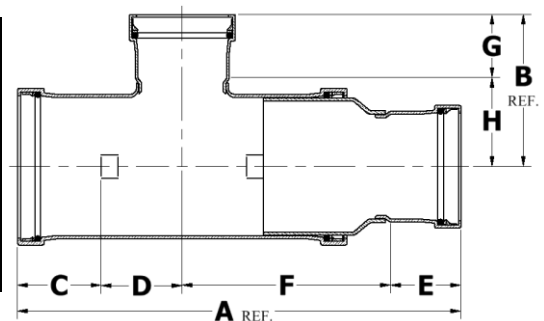
Part Name	Material
Body	UNS C12200 Copper
Grab Ring	304 / 306 Stainless Steel
Spacer Ring	Nylon 66
O-Ring	EPDM
Lubrication	Silicone, ANSI/NSF-61 Listed

DIMENSIONS

Item No.	Description	Dimension (in.)											(lb.)
		A	B	C*	D**	E*	F**	G*	H**	Height	Width	Depth	
10066499	811 2x1½x2½ CxCxC	11.99	5.33	1.51	4.53	1.31	4.65	1.90	1.85	5.33	11.99	3.16	4.32
10066595	811 2½x¾x2 CxCxC	9.74	5.08	1.90	1.67	0.89	5.29	1.59	1.92	5.08	9.74	3.16	3.06
10066514	811 2½x1x2½ CxCxC	9.55	5.33	1.90	1.67	0.97	5.02	1.90	1.85	5.33	9.55	3.16	3.40
10066504	811 2½x1½x2½ CxCxC	9.43	5.33	1.90	1.67	1.04	4.81	1.90	1.85	5.33	9.43	3.16	3.32
10066597	811 2½x1½x1½ CxCxC	9.52	4.83	1.90	1.67	1.31	4.65	1.47	1.78	4.83	9.52	3.16	3.03
10066598	811 2½x1½x2 CxCxC	9.52	5.08	1.90	1.67	1.31	4.65	1.59	1.92	5.08	9.52	3.16	3.13
10066507	811 2½x1½x2½ CxCxC	9.52	5.33	1.90	1.67	1.31	4.65	1.90	1.85	5.33	9.52	3.16	3.44
10066599	811 2½x2x¾ CxCxC	9.60	5.42	1.90	1.67	1.51	4.52	0.89	2.95	5.42	9.60	3.16	2.80

* Tolerance +/- .02"

**Tolerance +.15 / -.03



List continued on sheet #2

Elkhart Products Corporation
1255 Oak Street, Elkhart, IN 46514
www.elkhartproducts.com | (574) 264-3181

This specification is provided for reference only. Elkhart Products Corporation reserves the right to change any portion of this specification without notice and without incurring obligation to make such changes to Elkhart products previously or subsequently sold.



SUBMITTAL SHEET

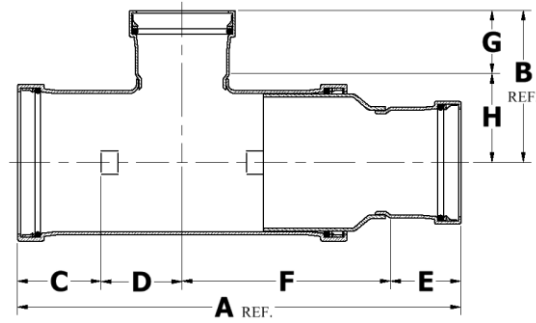
811-R Large-Small Diameter Series

APOLLOXPRESS® Press End Copper Tee
Reducer Run-Outlet CxCxC
(2" x 1½" x 2½" through 4" x 3" x 4")

Job Name:	
Job Location:	
Engineer:	
Contractor:	
Tag:	
PO Number:	
Representative:	
Wholesale Distributor:	

List continued from sheet #1

Item No.	Description	Dimension (in.)											(lb.)
		A	B	C*	D**	E*	F**	G*	H**	Height	Width	Depth	
10066522	811 3x¾x2½ CxCxC	10.77	5.90	2.10	1.88	0.89	5.91	1.90	2.16	5.90	10.77	3.68	4.39
10066523	811 3x¾x3 CxCxC	10.77	6.18	2.10	1.88	0.89	5.91	2.10	2.24	6.18	10.77	3.68	4.78
10066524	811 3x1x2½ CxCxC	10.58	5.90	2.10	1.88	0.97	5.64	1.90	2.16	5.90	10.58	3.68	4.42
10066525	811 3x1x3 CxCxC	10.58	6.18	2.10	1.88	0.97	5.64	2.10	2.24	6.18	10.58	3.68	4.81
10066529	811 3x2x2½ CxCxC	10.42	5.90	2.10	1.88	1.51	4.94	1.90	2.16	5.90	10.42	3.68	4.81
10066605	811 3x2½x2 CxCxC	10.93	5.59	2.10	1.87	1.90	5.06	1.59	2.17	5.59	10.93	3.68	4.47
10066136	811 3x2½x2½ CxCxC	10.93	5.90	2.10	1.88	1.90	5.06	1.90	2.16	5.90	10.93	3.68	4.77
10066137	811 3x2½x3 CxCxC	10.93	6.18	2.10	1.87	1.90	5.06	2.10	2.24	6.18	10.93	3.68	5.16
10066538	811 4x1½x3 CxCxC	13.07	7.28	2.50	2.42	1.31	6.84	2.10	2.81	7.28	13.07	4.70	8.43
10066606	811 4x3x1½ CxCxC	13.24	6.35	2.50	2.42	2.10	6.23	1.43	2.57	6.35	13.24	4.70	7.75
10066607	811 4x3x2 CxCxC	13.24	6.60	2.50	2.42	2.10	6.23	1.59	2.67	6.60	13.24	4.70	7.85
10066139	811 4x3x2½ CxCxC	13.22	6.91	2.50	2.42	2.10	6.20	1.90	2.66	6.91	13.22	4.70	8.18
10066140	811 4x3x4 CxCxC	13.24	7.64	2.50	2.42	2.10	6.23	2.50	2.81	7.64	13.24	4.70	9.69



* Tolerance +/- .02"

**Tolerance +.15 / -.03

This specification is provided for reference only. Elkhart Products Corporation reserves the right to change any portion of this specification without notice and without incurring obligation to make such changes to Elkhart products previously or subsequently sold.

Elkhart Products Corporation
1255 Oak Street, Elkhart, IN 46514
www.elkhartproducts.com | (574) 264-3181

