

**SECTION M: MERCHANDISING**

Pegboard Merchandising..... 383-387

Tilt Bin Merchandising ..... 388-395

Gondola Merchandising ..... 396-398

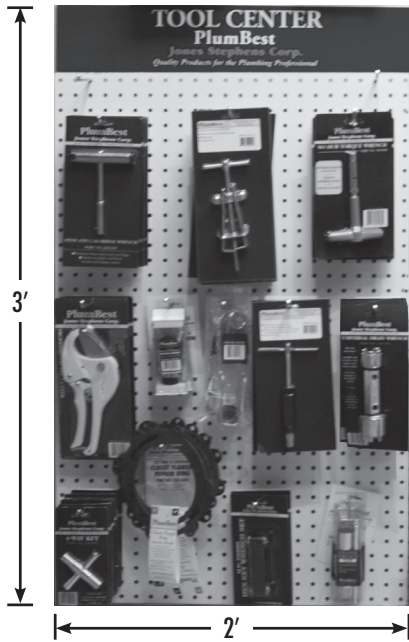
Drain Merchandising..... 399-400

Chemical Merchandising ..... 401-403



## PlumBest Tool Center

Display Part No. TB1100

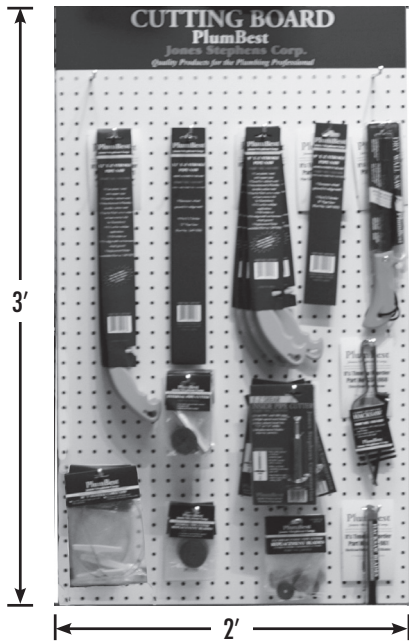


• 2' x 3' pegboard

PART NO.	DESCRIPTION	QTY
J45010	Universal Drain Wrench	5
J45015	Moen Cartridge Wrench	5
T60060	No Hub Torque Wrench	5
J40010	Faucet Handle Puller	5
J40015	Hex Key Set	5
J40048	Flint Striker	5
P70018	Professional PVC Cutter	5
J40021	Compression Sleeve Puller	5
J40005	4-Way Key	10
J40028	Strainer Wrench	5
C85000	Closet Flange Repair Ring	5
J40018	Extract-A-Drain	4

## PlumBest Cutting Board

Display Part No. TB1200



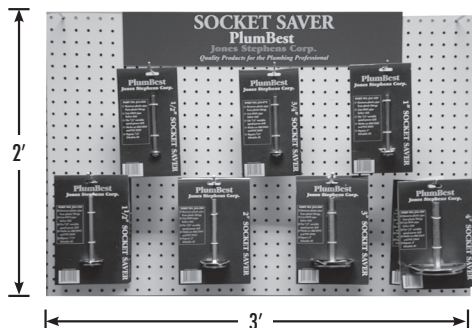
• 2' x 3' pegboard

PART NO.	DESCRIPTION	QTY
P70023	Inside Pipe Cutter	6
P70029	P70023 Replacement Blades	3
J40830	E-Z Shear Inside Pipe Cutter	6
J40831	J40830 Replacement Blades	3
S49008	12" E-Z Stroke Pipe Saw	6
S49007	12" E-Z Stroke Replacement Blade	6
S49236	T-Handle Cable Saw	6
S50060	Close Quarters Hacksaw	5
S49005	8" E-Z Stroke Pipe Saw	5
S49006	S49005 Replacement Blades	6
S50061	Close Quarters Hacksaw Blades	20
S49012	PlumBest Drywall Saw	6



## PlumBest Socket Saver

Display Part No. TB1300

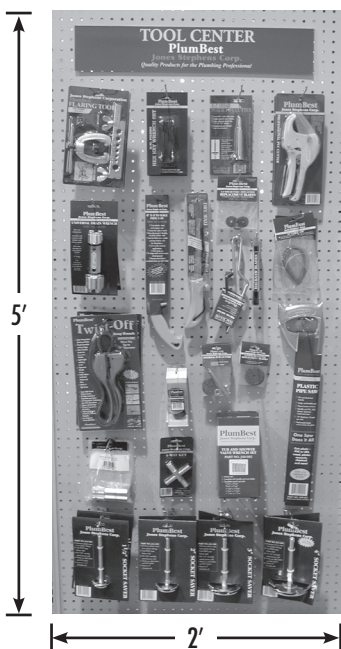


• 3' x 2' pegboard

PART NO.	DESCRIPTION	QTY
J44050	1/2" Socket Saver	4
J44075	3/4" Socket Saver	4
J44100	1" Socket Saver	4
J44150	1 1/2" Socket Saver	4
J44200	2" Socket Saver	4
J44300	3" Socket Saver	2
J44400	4" Socket Saver	2

## PlumBest Tool Board

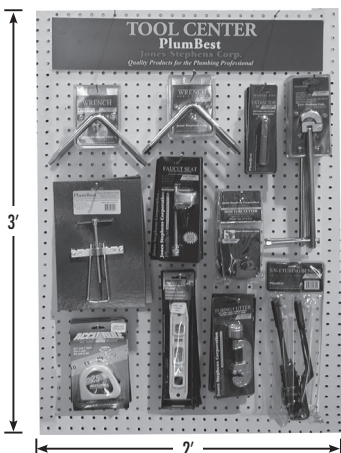
Display Part No. RTB100



PART NO.	DESCRIPTION	QTY
J40002	Tub/Shower Valve Wrench Set	2
J40005	4-Way Key	2
J40015	Hex Key Set	2
J40018	Extract-A-Drain Tub Extraction Tool	2
J40054	Nipple Extractor Set	2
J40080	Flaring Tool	2
J40325	Twist-Off Strap Tool	2
J40830	E-Z Shear Inside Pipe Cutter	2
J40831	E-Z Shear Pipe Cutter Blades	2
J44150	1 1/2" Socket Saver	2
J44200	2" Socket Saver	2
J44300	3" Socket Saver	2
J44400	4" Socket Saver	2
J45010	Universal Drain Wrench	2
P70018	Professional PVC Pipe Cutter	2
P70023	Inside Pipe Cutter	2
P70029	Inside Pipe Cutter Blades	2
P70066	1/8" x 1 1/8" Tube Cutter	2
S49001	PlumBest Plastic Pipe Saw	2
S49005	8" E-Z Stroke Pipe Saw	2
S49012	PlumBest Drywall Saw	2
S49036	36" PVC Cable Saw	2
S50060	Close Quarters Hacksaw	2
S50061	Close Quarters Hacksaw Blades	2
T50001	3-N-1 Tubing Bender	2

## PlumBest Tool Board

Display Part No. TB1600



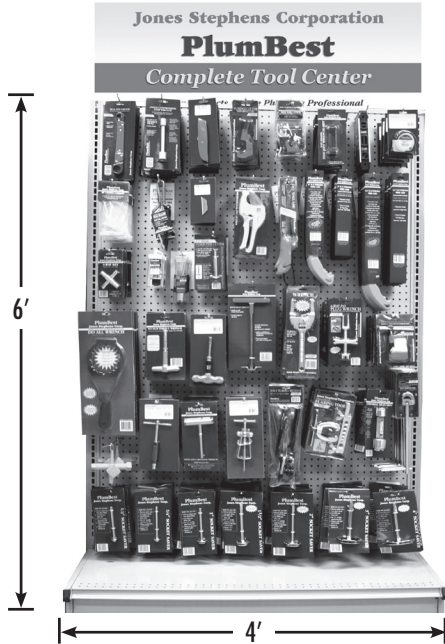
• 2' x 3' pegboard

PART NO.	DESCRIPTION	QTY
S62004	Angle Stepped Faucet Seat Wrench	6
S62002	Angle Tapered Faucet Seat Wrench	6
J40007	Faucet Seat Repair Kit	4
T50001	3-N-1 Tubing Bender	3
P70052	Mini Tube Cutter	6
P70066	Economy Tube Cutter	5
B11011	Telescoping Basin Wrench	6
J40012	E-Zee Pull Deluxe Faucet Handle Puller	6
J40051	Internal Pipe Nipple Extractors	6
J40101	Accu-Rule Tape Measure	4
J40100	Torpedo Level	6



## Complete Tool Center

Display Part No. TB1700



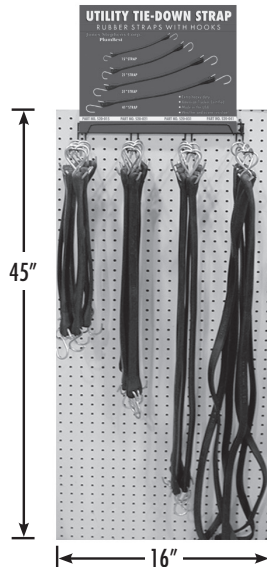
• 4' x 6' pegboard

PART NO.	DESCRIPTION	QTY
J45010	Universal Drain Wrench	5
J45015	Moen Cartridge Wrench	5
T60060	No Hub Torque Wrench	5
J40010	Faucet Handle Puller	5
J40015	Hex Key Set	5
J40048	Flint Striker	5
P70018	Professional PVC Cutter	5
J40021	Compression Sleeve Puller	3
J40042	6-Way Countersunk Plug Wrench	4
J40005	4-Way Key	10
S50060	6" Close Quarters Hacksaw	10
S50061	Close Quarters Hacksaw Blades	50
C85000	Closet Flange Repair Ring	5
P70023	Inside Pipe Cutter	6
P70029	Inside Pipe Cutter Blades	3
J40830	E-Z Shear Inside Pipe Cutter	6
J40831	E-Z Shear Inside Pipe Cutter Blade	3
S49008	12" E-Z Stroke Pipe Saw	6
S49007	12" E-Z Stroke Pipe Saw Blade	6
S49005	8" E-Z Stroke Pipe Saw	5
S49006	8" E-Z Stroke Pipe Saw Blade	5
S49012	PlumBest Drywall Saw	6
S49236	T-Handle Cable Saw	6
J40028	Strainer Wrench	5
J40018	Extract-A-Drain	5
J40019	Do All Plumbers Wrench	3
J40035	Lavatory Nut Removal Tool	5
J40260	1/2" Copper Tube Cutter	5
J40261	3/4" Copper Tube Cutter	5
J44050	1/2" Socket Saver	4
J44075	3/4" Socket Saver	4
J44100	1" Socket Saver	4
J44150	1 1/2" Socket Saver	4
J44200	2" Socket Saver	4
J44300	3" Socket Saver	2
J44400	4" Socket Saver	2



## Utility Tie-Down Strap

Display Part No. S20001



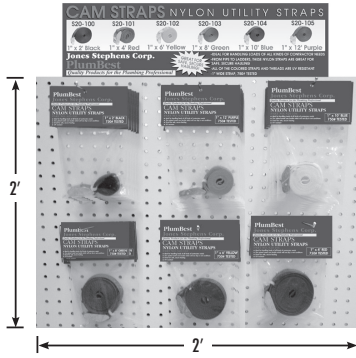
- Extra Heavy Duty
- American Trucker certified
- Weather and ozone resistant
- Made in the USA

MADE IN THE  
**USA**

PART NO.	LENGTH	MAX STRETCH	QTY
S20015	15"	20"	25
S20021	21"	36"	25
S20031	31"	53"	25
S20041	41"	70"	25

## Cam Straps

Display Part No. S20999

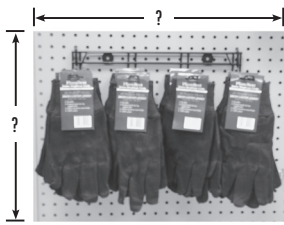


• 2' x 2' pegboard

PART NO.	DESCRIPTION	QTY
S20100	1" x 2' Black	12
S20101	1" x 4' Red	12
S20102	1" x 6' Yellow	12
S20103	1" x 8' Green	12
S20104	1" x 10' Blue	12
S20105	1" x 12' Purple	12

## Work Gloves

• Display Rack and Display Box included



Display Rack



Display Box

Display Part No. G50210

PART NO.	DESCRIPTION	QTY
G50200	Brown Cotton Jersey	216 pair

Display Part No. G50214

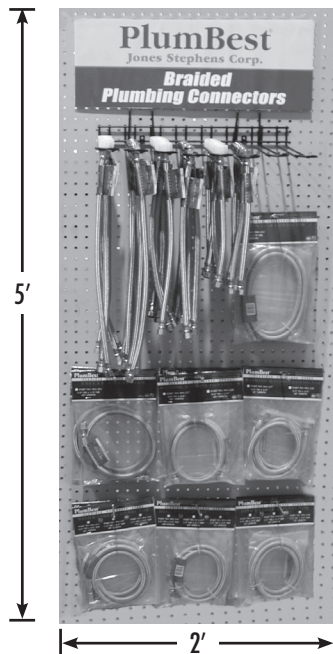
PART NO.	DESCRIPTION	QTY
G50204	Leather Palm Low Safety Cuff	96 pair

Display Part No. G50218

PART NO.	DESCRIPTION	QTY
G50208	Drivers' Style Leather	48 pair

## Stainless Steel Connectors Extended Assortment

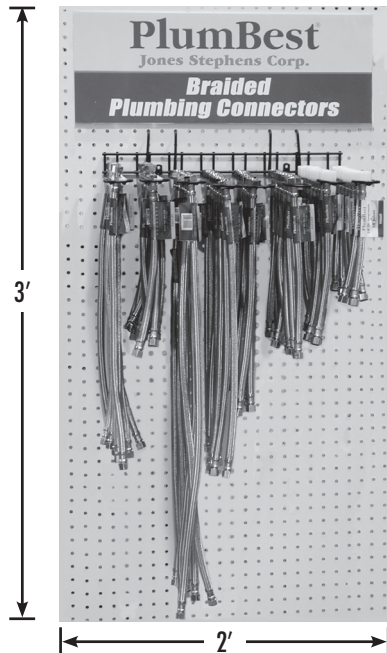
Display Part No. SSC100



PART NO.	DESCRIPTION	QTY
S04201	3/8" OD x 1/2" FIP x 12" SS Faucet Con.	25
S04202	3/8" OD x 1/2" FIP x 16" SS Faucet Con.	12
S04203	3/8" OD x 1/2" FIP x 20" SS Faucet Con.	25
S04204	3/8" OD x 1/2" FIP x 30" SS Faucet Con.	5
S04217	3/8" OD x 7/8" BC x 12" SS Ballcock Con.	25
S04218	3/8" OD x 7/8" BC x 16" SS Ballcock Con.	12
S04219	3/8" OD x 7/8" BC x 20" SS Ballcock Con.	12
S04227	3/4" FH x 3/4" x 48" SS Washing Machine Con.	5
S04228	3/4" FH x 3/4" x 60" SS Washing Machine Con.	5
S04234	3/8" OD x 3/8" MIP x 60" SS Dishwasher Con.	5
S04237	1/2" OD x 3/8" MIP x 60" SS Dishwasher Con.	5
S04238	1/2" OD x 3/8" MIP x 72" SS Dishwasher Con.	5
S04232	1/2" OD x 1/4" OD x 84" SS Icemaker Con.	5
H99000	Flexible Connector Display Unit w/Header	1
TB1Hook	Additional Hooks	6

## Stainless Steel Connectors Assortment

Display Part No. S04303

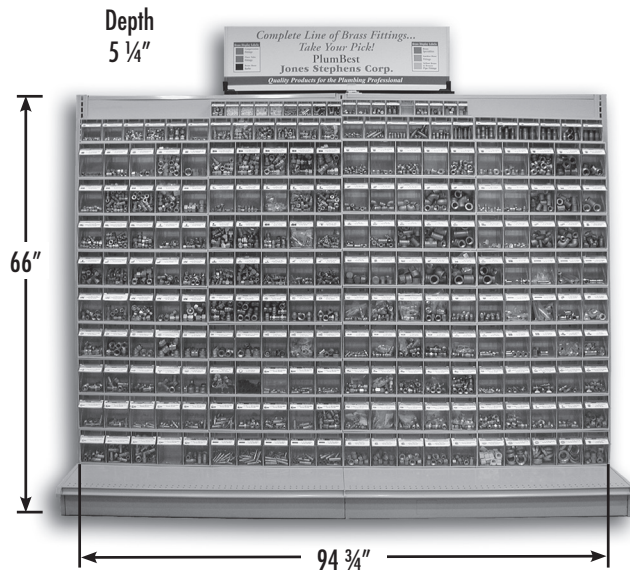


• CARTON QUANTITIES ONLY

PART NO.	DESCRIPTION	QTY
S04201	3/8" OD x 1/2" FIP x 12" SS Faucet Con.	8
S04202	3/8" OD x 1/2" FIP x 16" SS Faucet Con.	8
S04203	3/8" OD x 1/2" FIP x 20" SS Faucet Con.	8
S04204	3/8" OD x 1/2" FIP x 30" SS Faucet Con.	8
S04216	3/8" OD x 7/8" BC x 9" SS Ballcock Con.	7
S04217	3/8" OD x 7/8" BC x 12" SS Ballcock Con.	7
S04240	3/8" OD x 12" SS Delta Style Faucet Con.	12
S04242	3/8" OD x 20" SS Delta Style Faucet Con.	12
H99000	Flexible Connector Display Unit w/Header	1
TB1000	2' x 3' Peg Board	1

## Complete Brass Assortment

Display Part No. Q01011



\*Gondola Not Included

- Complete Brass assortment includes all 5 of the assortments (Q01012, Q01013, Q01014, Q01015, Q01016) plus the following items:
- Get 42 Multistore Bins FREE!
- Note: The items listed on this page are currently included in our complete brass assortment, but not as part of the individual assortment packages.

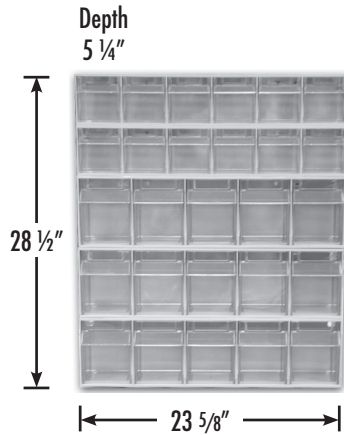
PART NO.	DESCRIPTION	QTY
N10442	1/4" OD x 1/8" MIP (Angle Needle Valve)	25
N15100	3/8" x Close CP Nipple	5
N15200	3/8" x 2" CP Nipple	5
N15400	3/8" x 4" CP Nipple	5
N16100	1/2" x Close CP Nipple	5
N16200	1/2" x 2" CP Nipple	5
N16400	1/2" x 4" CP Nipple	5
B50001	3/8" 90° CP Elbow	5
B50002	1/2" 90° CP Elbow	5
B50041	3/8" CP Coupling	5
B50042	1/2" CP Coupling	5
B50031	3/8" CP Tee	5
B50032	1/2" CP Tee	5
B10100	1/2" - 14 x 3/8" Regular Zamak Basin Nut	25
B10102	1/2" - 14 x 1/2" Regular Zamak Basin Nut	25
B10103	1/2" - 14 x 9/16" Regular Zamak Basin Nut	25
B10104	1/2" - 14 x 9/16" Regular Brass Basin Nut	25
B10105	1/2" - 14 x 1/2" White Faucet Nut	25
C74002	3/8" Compression Cap	25
C74011	7/8" OD Compression Sleeve	50
C74020	7/8" OD Compression Nut	50
C74031	1/2" x 3/8" Comp Reducing Union	25
C74093	5/8" OD x 5/8" OD (1/2" Sweat Adapter)	25
C74094	3/8" CP Compression Nut	25
C74096	1/4" OD Delrin Comp Sleeve	100
C74097	3/8" OD Delrin Comp Sleeve	100
C74098	1/2" OD Delrin Comp Sleeve	100
C74099	5/8" OD Delrin Comp Sleeve	25
C74100	1/4" Brass Insert	100
C74101	3/8" Brass Insert	100
C74102	1/2" Brass Insert	40
C74103	5/8" Brass Insert	25
S92001	Self-piercing Needle Valve Kit	10
T77125	1 1/4" x 1 1/4" CP Slip Joint Nut	25
T77150	1 1/2" x 1 1/2" CP Slip Joint Nut	25
T77151	1 1/2" x 1 1/4" CP Slip Joint Nut	25
C05080	5/8" x 1/2" Zinc Ballcock Coupling Nut	25
C05081	5/8" x 7/8" Brass Ballcock Coupling Nut	25
G20056	3/4" FGH Cap with Chain	10
A11001	1/4" FIP x 1/4" MIP Brass Air Cock with Lever Handle and Hex Shoulder	5
A11003	1/4" FIP x 1/4" MIP Brass Air Cock with Tee Handle and Hex Shoulder	5
A11004	1/4" FIP x 1/4" FIP Brass Air Cock with Lever Handle and Round Shoulder	5
A11005	1/4" FIP x 1/4" FIP Brass Air Cock	5
N01001	1/8" MIP Lever Handle Drain Cock	10
N01002	1/4" MIP Lever Handle Drain Cock	10
Q01005	5-unit Tilt Bin Display	36
Q01006	6-unit Tilt Bin Display	4
Q01009	9-unit Tilt Bin Display	2



# Flare Fittings Assortment

Display Part No. Q01013

• Get 5 Multistore Bins FREE!



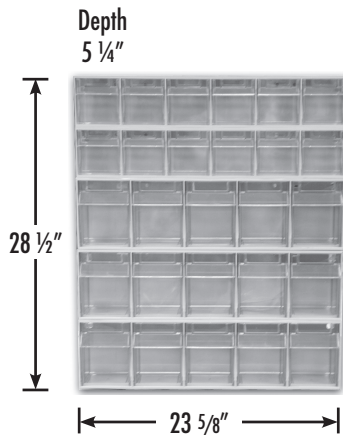
PART NO.	DESCRIPTION	QTY
F40002	1/4" Short Flare Nut	25
F40004	3/8" Short Flare Nut	50
F40005	1/2" Short Flare Nut	50
F40006	5/8" Short Flare Nut	25
F40020	3/8" Flare Cap	25
F40021	1/2" Flare Cap	25
F40023	1/4" Flare Union	25
F40025	3/8" Flare Union	25
F40026	1/2" Flare Union	25
F40027	5/8" Flare Union	10
F40035	3/8" Flare Tee	10
F40036	1/2" Flare Tee	10
F40048	3/8" Flare x 3/8" FIP Coupling	20
F40049	3/8" Flare x 1/2" FIP Coupling	20
F40052	1/2" Flare x 3/8" FIP Coupling	20
F40053	1/2" Flare x 1/2" FIP Coupling	20
F40055	5/8" Flare x 1/2" FIP Coupling	15
F40063	1/4" Flare x 1/8" MIP Half Union	20
F40064	1/4" Flare x 1/4" MIP Half Union	20
F40068	3/8" Flare x 1/4" MIP Half Union	20
F40069	3/8" Flare x 3/8" MIP Half Union	25
F40070	3/8" Flare x 1/2" MIP Half Union	25
F40073	1/2" Flare x 3/8" MIP Half Union	25
F40074	1/2" Flare x 1/2" MIP Half Union	25
F40076	5/8" Flare x 1/2" MIP Half Union	15
F40088	3/8" Flare x 3/8" MIP Elbow	10
Q01005	5-unit Tilt Bin Display	3
Q01006	6-unit Tilt Bin Display	2



## Brass Flare Tube Fittings Assortment

Display Part No. Q01013R

• Get 5 Multistore Bins FREE!

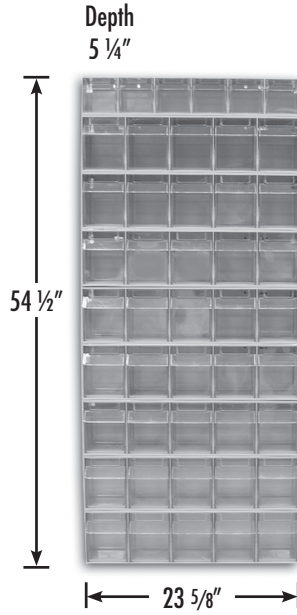


PART NO.	DESCRIPTION	QTY
F40002	1/4" Short Flare Nut	25
F40004	3/8" Short Flare Nut	50
F40005	1/2" Short Flare Nut	50
F40006	5/8" Short Flare Nut	25
F40020	3/8" Flare Cap	25
F40021	1/2" Flare Cap	25
F40023	1/4" Flare Union	25
F40025	3/8" Flare Union	25
F40026	1/2" Flare Union	25
F40027	5/8" Flare Union	10
F40035	3/8" Flare Tee	10
F40036	1/2" Flare Tee	10
F40048	3/8" OD x 3/8" FIP Coupling	20
F40049	3/8" OD x 1/2" FIP Coupling	20
F40052	1/2" OD x 3/8" FIP Coupling	20
F40053	1/2" OD x 1/2" FIP Coupling	20
F40055	5/8" OD x 1/2" FIP Coupling	15
F40063	1/4" OD x 1/8" MIP Half Union	20
F40064	1/4" OD x 1/4" MIP Half Union	20
F40068	3/8" OD x 1/4" MIP Half Union	20
F40069	3/8" OD x 3/8" MIP Half Union	25
F40070	3/8" OD x 1/2" MIP Half Union	25
F40073	1/2" OD x 3/8" MIP Half Union	25
F40074	1/2" OD x 1/2" MIP Half Union	25
F40076	5/8" OD x 1/2" MIP Half Union	15
F40088	3/8" OD x 3/8" MIP Elbow	10
F40092	1/2" OD x 1/2" MIP Elbow	10
Q01005	5-unit Tilt Bin Display	3
Q01006	6-unit Tilt Bin Display	2

# Compression Fittings Assortment

Display Part No. Q01012

• Get 9 Multistore Bins FREE!

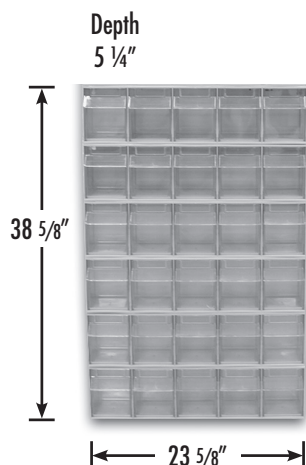


PART NO.	DESCRIPTION	QTY
C74005	1/4" OD Compression Sleeve	100
C74007	3/8" OD Compression Sleeve	100
C74008	1/2" OD Compression Sleeve	100
C74009	5/8" OD Compression Sleeve	100
C74014	1/4" OD Compression Sleeve	100
C74016	3/8" OD Compression Nut	100
C74017	1/2" OD Compression Nut	100
C74018	5/8" OD Compression Nut	100
C74023	1/4" OD Compression Union	50
C74025	3/8" OD Compression Union	100
C74026	1/2" OD Compression Union	50
C74027	5/8" OD Compression Union	50
C74029	7/8" OD Compression Union	25
C74030	3/8" x 1/4" Comp Reducing Union	25
C74031	1/2" x 3/8" Comp Reducing Union	25
C74032	5/8" x 3/8" Comp Reducing Union	25
C74034	1/4" OD Compression Tee	10
C74036	3/8" OD Compression Tee	20
C74038	1/2" OD Compression Tee	10
C74041	3/8" OD Compression Elbow	25
C74043	5/8" OD Compression Elbow	10
C74044	5/8" x 3/8" Compression Elbow	10
C74050	3/8" OD x 3/8" FIP Comp Union	25
C74051	3/8" OD x 1/2" FIP Comp Union	25
C74052	1/2" OD x 3/8" FIP Comp Union	25
C74053	1/2" OD x 1/2" FIP Comp Union	25
C74054	5/8" x OD x 1/2" FIP Comp Union	10
C74055	7/8" OD x 3/4" FIP Comp Union	10
C74058	1/4" OD x 1/8" MIP Comp Union	25
C74059	1/4" OD x 1/4" MIP Comp Union	25
C74060	1/4" OD x 3/8" MIP Comp Union	25
C74064	3/8" OD x 1/4" MIP Comp Union	25
C74065	3/8" OD x 3/8" MIP Comp Union	50
C74066	3/8" OD x 1/2" MIP Comp Union	50
C74069	1/2" OD x 3/8" MIP Comp Union	50
C74070	1/2" OD x 1/2" MIP Comp Union	50
C74071	5/8" OD x 1/2" MIP Comp Union	40
C74072	5/8" OD x 3/4" MIP Comp Union	25
C74073	7/8" OD x 3/4" MIP Comp Union	20
C74081	1/4" OD x 1/8" MIP Comp Elbow	25
C74082	1/4" OD x 1/4" MIP Comp Elbow	25
C74085	3/8" OD x 1/4" MIP Comp Elbow	25
C74086	3/8" OD x 3/8" MIP Comp Elbow	60
C74087	3/8" OD x 1/2" MIP Comp Elbow	25
C74088	1/2" OD x 3/8" MIP Comp Elbow	50
C74089	1/2" OD x 1/2" MIP Comp Elbow	25
Q01005	5-unit Tilt Bin Display	8
Q01006	6-unit Tilt Bin Display	1



## Mini Compression Fittings Assortment

Display Part No. Q01030R

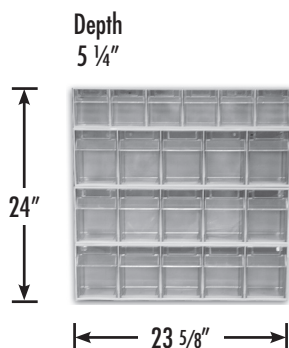


• Get 6 Multistore Bins FREE!

PART NO.	DESCRIPTION	QTY
C74096	1/4" OD Delrin Comp Sleeve	100
C74097	3/8" OD Delrin Comp Sleeve	100
C74098	1/2" OD Delrin Comp Sleeve	100
C74100	1/4" Brass Insert	100
C74101	3/8" Brass Insert	100
C74102	1/2" Brass Insert	40
C74005	1/4" OD Compression Sleeve	100
C74007	3/8" OD Compression Sleeve	100
C74008	1/2" OD Compression Sleeve	100
C74009	5/8" OD Compression Sleeve	100
C74016	3/8" OD Compression Nut	25
C74017	1/2" OD Compression Nut	25
C74023	1/4" OD Compression Nut	25
C74025	3/8" OD Compression Union	25
C74026	1/2" OD Compression Union	25
C74027	5/8" OD Compression Union	25
C74052	1/2" OD x 3/8" FIP Comp Union	25
C74059	1/4" OD x 1/4" MIP Comp Union	25
C74065	3/8" OD x 3/8" MIP Comp Union	25
C74070	1/2" OD x 1/2" MIP Comp Union	25
C74058	1/4" OD x 1/8" MIP Comp Union	25
C74064	3/8" OD x 1/4" MIP Comp Union	25
C74066	3/8" OD x 1/2" MIP Comp Union	25
C74069	1/2" OD x 3/8" MIP Comp Union	25
C74082	1/4" OD x 1/4" MIP Comp Elbow	25
C74086	3/8" OD x 3/8" MIP Comp Elbow	25
C74081	1/4" OD x 1/8" MIP Comp Elbow	25
C74085	3/8" OD x 1/4" MIP Comp Elbow	25
S92001	Self-piercing Needle Valve Kit	25
Q01005	5-unit Tilt Bin Display	6

## Garden Hose Fitting Assortment

Display Part No. Q01014

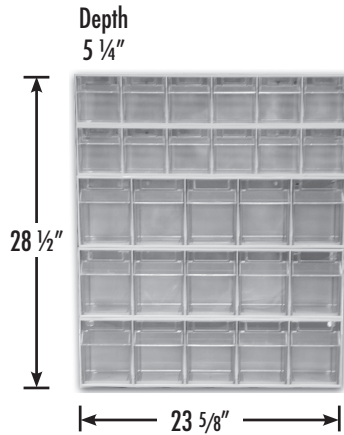


• Get 4 Multistore Bins FREE!

PART NO.	DESCRIPTION	QTY
G20002	3/4" MGH x 1/2" MIP	25
G20003	3/4" MGH x 3/4" MIP Tapped 1/2" FIP	25
G20008	3/4" MGH to 3/4" MGH	25
G20010	3/4" MGH x 1/2" FIP	10
G20011	3/4" MGH x 3/4" FIP	25
G20015	3/4" FGH x 1/2" MIP	10
G20016	3/4" FGH x 3/4" MIP	25
G20020	3/4" FGH x 1/2" FIP	10
G20021	3/4" FGH x 3/4" FIP	10
G20030	3/4" FGH Swivel	25
G20031	3/4" FGH x 1/2" FIP Swivel	25
G20032	3/4" FGH x 3/4" FIP Swivel	25
G20036	1/2" ID x 3/4" FGH Swivel Hose Barb	5
G20037	5/8" ID x 3/4" FGH Swivel Hose Barb	10
G20038	3/4" ID x 3/4" FGH Swivel Hose Barb	2
G20041	1/2" ID x 3/4" MGH Hose Barb	5
G20042	5/8" ID x 3/4" MGH Hose Barb	10
G20043	3/4" ID x 3/4" MGH Hose Barb	5
G20050	3/4" FGH x 3/4" MGH Wye	5
G20055	3/4" GH Cap	25
G20057	3/4" Hose Washer	200
Q01005	5-unit Tilt Bin Display	3
Q01006	6-unit Tilt Bin Display	1

# Brass Hose Barb Assortment

Display Part No. Q01016

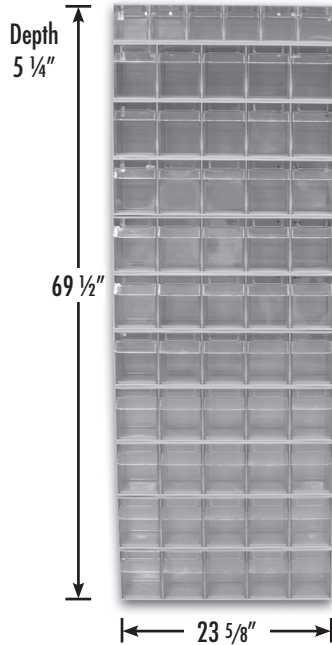


• Get 5 Multistore Bins FREE!

PART NO.	DESCRIPTION	QTY
G25032	3/16" ID x 1/8" MIP Hose Barb	10
G25042	1/4" ID x 1/8" MIP Hose Barb	10
G25044	1/4" ID x 1/4" MIP Hose Barb	24
G25046	1/4" ID x 3/8" MIP Hose Barb	10
G25048	1/4" ID x 1/2" MIP Hose Barb	10
G25052	5/16" ID x 1/8" MIP Hose Barb	10
G25054	5/16" ID x 1/4" MIP Hose Barb	10
G25064	3/8" ID x 1/4" MIP Hose Barb	20
G25066	3/8" ID x 3/8" MIP Hose Barb	30
G25068	3/8" ID x 1/2" MIP Hose Barb	10
G25084	1/2" ID x 1/4" MIP Hose Barb	25
G25086	1/2" ID x 3/8" MIP Hose Barb	15
G25088	1/2" ID x 1/2" MIP Hose Barb	40
G25106	5/8" ID x 3/8" MIP Hose Barb	20
G25108	5/8" ID x 1/2" MIP Hose Barb	25
G25101	5/8" ID x 3/4" MIP Hose Barb	25
G25121	3/4" ID x 3/4" MIP Hose Barb	10
G25128	3/4" ID x 1/2" MIP Hose Barb	5
G29004	1/4" ID Hose Splicer	100
G29005	5/16" ID Hose Splicer	100
G29006	3/8" ID Hose Splicer	95
G29008	1/2" ID Hose Splicer	70
G29010	5/8" ID Hose Splicer	50
N10544	1/4" OD x 1/4" OD St. Needle Valve	25
N10566	3/8" OD x 3/8" OD St. Needle Valve	25
N10642	1/4" OD x 1/8" MIP St. Needle Valve	25
N10664	3/8" OD x 1/4" MIP St. Needle Valve	25
Q01005	5-unit Tilt Bin Display	3
Q01006	6-unit Tilt Bin Display	2

## Yellow Brass & Bronze Pipe Fittings

Display Part No. Q01015



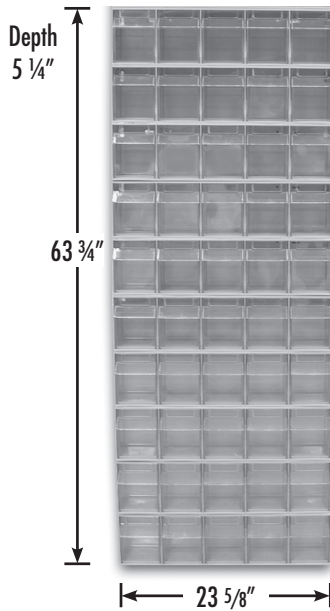
• Get 11 Multistore Bins FREE!

PART NO.	DESCRIPTION	QTY
B74001	1/8" 90° Pipe Elbow	10
B74002	1/4" 90° Pipe Elbow	10
B74003	3/8" 90° Pipe Elbow	10
B74004	1/2" 90° Pipe Elbow	20
B74005	3/4" 90° Pipe Elbow	20
B74006	1" 90° Pipe Elbow	5
P10012	1/8" Pipe Tee	10
B74082	1/4" Pipe Tee	10
B74083	3/8" Pipe Tee	5
B74084	1/2" Pipe Tee	10
B74085	3/4" Pipe Tee	10
B74086	1" Pipe Tee	10
P10032	1/8" Pipe Coupling	10
P10034	1/4" Pipe Coupling	10
B74123	3/8" Pipe Coupling	10
B74124	1/2" Pipe Coupling	20
B74125	3/4" Pipe Coupling	20
B74126	1" Pipe Coupling	10
P10082	1/8" Pipe Cap	10
P10084	1/4" Pipe Cap	10
P10086	3/8" Pipe Cap	10
B74184	1/2" Pipe Cap	25
B74185	3/4" Pipe Cap	25
B74186	1" Pipe Cap	10
P10092	1/8" Square Head Pipe Plug	25
P10094	1/4" Square Head Pipe Plug	50
P10096	3/8" Square Head Pipe Plug	25
B74284	1/2" Square Head Pipe Plug	30
B74285	3/4" Square Head Pipe Plug	30
B74286	1" Square Head Pipe Plug	10
P11042	1/4" x 1/8" Hex Bushing	25
P11062	3/8" x 1/8" Hex Bushing	25
P11064	3/8" x 1/4" Hex Bushing	20
P11084	1/2" x 1/4" Hex Bushing	20
P11086	1/2" x 3/8" Hex Bushing	50
P11124	3/4" x 1/4" Hex Bushing	10
P11128	3/4" x 1/2" Hex Bushing	50
B74212	1" x 1/2" Hex Bushing	20
B74213	1" x 3/4" Hex Bushing	25
P11202	1/8" x Close Pipe Nipple	25
P11204	1/4" x Close Pipe Nipple	25
P11206	3/8" x Close Pipe Nipple	25
P11208	1/2" x Close Pipe Nipple	25
N24000	3/4" x Close Pipe Nipple	25
N25000	1" x Close Pipe Nipple	10
P13232	1/8" x 2" Pipe Nipple	20
P13432	1/4" x 2" Pipe Nipple	20
P13632	3/8" x 2" Pipe Nipple	20
N23002	1/2" x 2" Pipe Nipple	25
N24002	3/4" x 2" Pipe Nipple	25
N25002	1" x 2" Pipe Nipple	10
P16002	1/8" 90° Street Elbow	10
P16004	1/4" 90° Street Elbow	10
B74023	3/8" 90° Street Elbow	10
B74024	1/2" 90° Street Elbow	10
Q01005	5-unit Tilt Bin Display	10
Q01006	6-unit Tilt Bin Display	1

# Poly Insert Assortment

Display Part No. Q01027

• Get 10 Multistore Bins FREE!



PART NO.	DESCRIPTION	QTY
I10001	1/2" Poly Insert x MIP Adapter	20
I10002	3/4" Poly Insert x MIP Adapter	25
I10003	1" Poly Insert x MIP Adapter	25
I10004	1 1/4" Poly Insert x MIP Adapter	15
I10005	1 1/2" Poly Insert x MIP Adapter	15
I10006	2" Poly Insert x MIP Adapter	10
I10007	1/2" Poly Insert x FIP Adapter	20
I10008	3/4" Poly Insert x FIP Adapter	20
I10009	1" Poly Insert x FIP Adapter	15
I10010	1 1/4" Poly Insert x FIP Adapter	40
I10011	1 1/2" Poly Insert Coupling	20
I10012	3/4" Poly Insert Coupling	25
I10013	1" Poly Insert Coupling	25
I10014	1 1/4" Poly Insert Coupling	15
I10015	1 1/2" Poly Insert Coupling	15
I10016	2" Poly Insert Coupling	10
I10017	3/4" x 1/2" Poly Insert Red Coupling	20
I10018	1" x 1/2" Poly Insert Red Coupling	10
I10019	1" x 3/4" Poly Insert Red Coupling	20
I10020	1 1/4" x 1" Poly Insert Red Coupling	20
I10021	1 1/2" x 1 1/4" Poly Insert Red Coupling	10
I10022	2" x 1 1/2" Poly Insert Red Coupling	5
I10023	1/2" Poly Insert Elbow	20
I10024	3/4" Poly Insert Elbow	25
I10025	1" Poly Insert Elbow	25
I10026	1 1/4" Poly Insert Elbow	15
I10027	1 1/2" Poly Insert Elbow	15
I10028	2" Poly Insert Elbow	10
I10029	1/2" Poly Insert Tee	20
I10030	3/4" Poly Insert Tee	25
I10031	1" Poly Insert Tee	25
I10032	1 1/4" Poly Insert Tee	15
I10033	1 1/2" Poly Insert Tee	15
I10034	2" Poly Insert Tee	10
I10035	1/2" Poly Insert x MIP Comb Elbow	20
I10036	3/4" Poly Insert x MIP Comb Elbow	20
I10037	1" Poly Insert x MIP Comb Elbow	15
I10038	1 1/4" Poly Insert x MIP Comb Elbow	10
I10039	1 1/2" Poly Insert x MIP Comb Elbow	10
I10040	3/4" MIP x 1/2" Poly Insert Adapter	20
I10041	1" MIP x 3/4" Poly Insert Adapter	15
I10042	1 1/4" MIP x 1" Poly Insert Adapter	10
I10043	3/4" x 3/4" 1/2" Poly Insert Red Tee	10
I10044	3/4" x 1/2" 1/2" Poly Insert Red Tee	10
I10045	1" x 1" x 1/2" Poly Insert Red Tee	10
I10046	1" x 1" x 3/4" Poly Insert Red Tee	10
I10047	1" x 3/4" x 3/4" Poly Insert Red Tee	10
I10048	1 1/2" x 1 1/2" x 1" Poly Insert Red Tee	10
I10049	2" x 2" x 1" Poly Insert Red Tee	5
Q01005	5-unit Tilt Bin Display	10

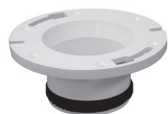


# Drain & Flange Assortment (Bulk)

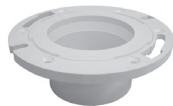
Display Part No. DFD100



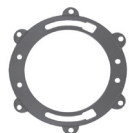
\*Gondola Not Included



C4743P



C53342



C85000



C87100



D40005



D40140



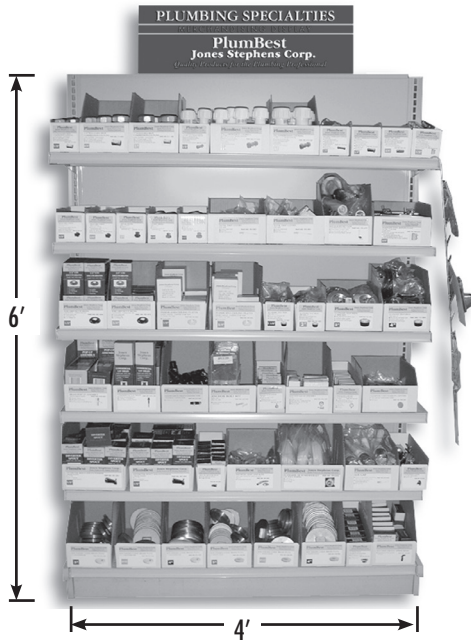
D50001

PART NO.	DESCRIPTION	QTY
C40420	4" x 2" CI No Caulk Closet Flange	1
C4743P	4" x 3" PVC Two Finger Flange	1
C51340	3" x 4" PVC Flange Less Knockout	3
C53340	3" x 4" PVC Flange w/ Metal Ring, Less KO	2
C53342	3" x 4" PVC Adjustable Flange w/ Plastic Swivel Ring, Less KO	3
C54402	3" x 4" PVC Offset Adjustable Flange w/ Plastic Swivel Ring	1
C85000	Metal Closet Flange	2
C87100	Gapper Flange	2
C88001	Closet Flange Extender	2
D40003	4 1/4" PB Snap-in Strainer for No Caulk Drain	1
D40005	4 1/4" SS Snap-in Strainer for No Caulk Drain	2
D40101	2" No Caulk Shower Drain with SS Strainer	2
D40140	2" No Caulk Brass Shower Stall Drain	1
D40600	2" x 3" Area Drain	2
D40601	3" x 4" Area Drain	2
D41001	2" Shower Drain with Receptor Base	2
D41009	2" PVC Drop-In Shower Drain w/ PB Strainer	1
D42006H	6" x 6" PVC Bell Trap with Hinged Lid	2
D50001	2" x 3" PVC Shower/Floor Drain w/ SS Strainer	2
D54100	3" x 4" PVC General Purpose Drain w/ SS Strainer	2
D59001	2" SS Push-in Strainer	2
D59002	3" SS Push-in Strainer	2
D59003	4" SS Push-in Strainer	2
S26004	3" x 2" PVC Saddle Tee Kit	2
S26005	4" x 2" PVC Saddle Tee Kit	2



# Plumbing Specialties Display

Display Part No. Q01018

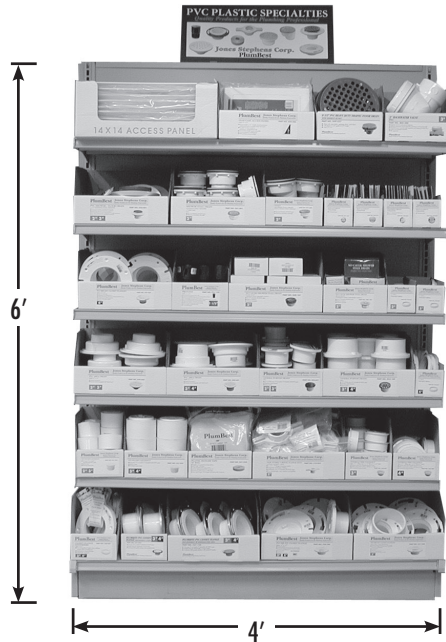


PART NO.	DESCRIPTION	QTY
C11050	1/2" IPS Galvanized Compression Coupling	10
C11075	3/4" IPS Galvanized Compression Coupling	10
C11100	1" IPS Galvanized Compression Coupling	10
C12050	1/2" IPS PVC Compression Coupling	12
C12075	3/4" IPS PVC Compression Coupling	10
C12100	1" IPS PVC Compression Coupling	10
C15050	1/2" CTS (3/8" IPS) Bronze Compression Coupling	10
C15075	3/4" CTS (1/2" IPS) Bronze Compression Coupling	10
D06753	3/4" MIP x 3" Dielectric Nipple	20
R60050	1/2" IPS / 3/4" CTS SS Repair Clamp	8
D06050	1/2" FIP x 1/2" SWEAT (5/8" OD) Dielectric Union	15
D06075	3/4" FIP x 3/4" SWEAT (7/8" OD) Dielectric Union	15
C27134	1" x 3/4" Urinal Spud	15
C27125	1 1/4" Closet Spud	12
C27150	1 1/2" Closet Spud	10
C02011	1/4" x 2 1/4" BP Closet Bolts/Round Washer	50 pair
T01001	Fit-All CP Tank Trip Lever with 9" Brass Arm	20
C05070	Douglas Plastic Flush Valve with SS Chain	6
R60075	3/4" x 6" SS Repair Clamp	8
E01050	1/2" CTS (5/8" OD) CP Low Pattern Escutcheon	200
E01075	3/4" CTS (7/8" OD) CP Low Pattern Escutcheon	200
F01050	1/2" CTS 5/8" OD F&C Plate - Light Gauge	108
F01075	3/4" CTS - 7/8" OD F&C Plate - Light Gauge	108
T31001	1 1/2" Economy Test Plug	16
T31002	2" Economy Test Plug	12
T31003	3" Economy Test Plug	12
T31004	4" Economy Test Plug	10
P35001	CP Brass Pop-Up	6
D70100	CP Commercial Grid Lav Drain	6
D10001	Dishwasher Connection with 2 Worm Gear Clamps	20
A33002	#10 x 1 1/4" Anchor Kit	6
J66300	300 PSI Water Test Gauge	6
G64030	30 lb. Gas Test Gauge Assembly	6
G60030	30 PSI 2" Pressure Gauge	10
C90600	6" SS Cleanout Cover	25
D01001	1/2" FIP CP Diverter Spout (nose)	8
D01004	1/2" CTS CP Diverter Spout (slip)	8
S01004	CP 1 5/8" Deluxe Die Cast Shower Head	10
S01044	1/2" x 6" CP Shower Arm and SS Flange	10
S92025	1/4" x 25' Icemaker Kit Poly Tubing	8
A10001	Air Gap	10
B10201	1 3/4" OD Cock Hole Cover	25
P51300	3" Countersunk Southern Code Brass Plug	15
P51350	3 1/2" Countersunk Southern Code Brass Plug	15
P51400	4" Countersunk Southern Code Brass Plug	15
P50300	3" Raised Head Southern Code Brass Plug	15
P50350	3 1/2" Raised Head Southern Code Brass Plug	15
P50400	4" Raised Head Southern Code Brass Plug	15
B02050	SS Junior Duo Basket Strainer	6
K52001	Kitchen Faucet Spray Head Only	10
C04004	Carded Blue Vinyl Flapper	12
C87100	Gapper Repair Flange	12
Q01010	4' Gondola with Five Shelves	1



**PVC Plastic Specialties**

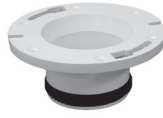
Display Part No. Q01017



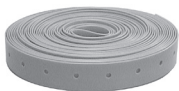
A04006



D41001



C4743P



H21050



C88001



C51340

PART NO.	DESCRIPTION	QTY
A05014	14" x 14" Snap-Ease Access Panel	10
A04006	6" x 9" Access Panel	10
D49827	8 1/2" Heavy Duty Traffic Floor Drain w/ Sediment Bucket	2
B04300	3" Backwater Valve	2
D50001	2" x 3" PVC Shower Drain w/ SS Strainer	8
D41001	2" PVC Shower Drain with SS Strainer & Receptor Base	15
D41600	2" PVC Offset Shower Stall Drain with SS Strainer	5
D41102	Polished Brass Replacement Strainer	5
C60810	4 1/4" SS Stamped Coverall Replacement Strainer	5
D40003	4 1/4" PB Snap-in Replacement Strainer	5
C60809	4 1/4" SS Stamped Coverall Replacement Strainer	5
C4743P	3" x 3" PVC Plastic Two Finger Flange	6
P21150	Provent	20
D40101	2" PVC NC Shower Drain with SS Strainer	15
D40140	2" PVC NC Shower Drain with SS Strainer - Brass Body	12
P48002	2" Socket Ring	20
P48003	3" Socket Ring	15
P48004	4" Socket Ring	10
D40600	2" x 3" PVC General Purpose Area Drain	6
D40601	3" x 4" PVC General Purpose Area Drain	6
D54001	2" x 3" PVC Drain with SS Strainer	12
D54100	3" x 4" PVC Drain with SS Strainer	10
C61023	2" x 3" Fit Flush Cleanout with 2" IPS plug - 2 3/8" OD	10
C61034	3" x 4" Fit Flush Cleanout with 3" IPS plug - 3 1/2" OD	10
H21050	50' Plastic Hanger Tape	10
F10002	2" Adjustable Urinal Flange Kit Socket Fit	10
C60007	3" PVC Internal Pipe Cleanout Fitting	10
C60008	4" Internal Pipe Cleanout Fitting	10
C88001	1/2" Closet Flange Extender	10
C57034	3" x 4" PVC Closet Flange with SS Ring and KO	4
C50340	3" x 4" PVC Closet Flange with KO	8
C51340	3" x 4" PVC Closet Flange w/o KO	8
C57134	3" x 4" PVC Closet Flange with SS Ring w/o KO	8
-	Zip Strip for Hanging Carded Items	1

## "Code Blue" Light Commercial Cast Iron

Display Part No. Q01031



### Drain Spuds

FITS SLOT #	PART NO.	IPS SIZE	SPUD MATERIAL	STRAINER SIZE / MATERIAL	STRAINER DIAMETER	QTY
4R	D60986	3 1/2"	Metal	4" NB	Round	6
2A	D60990	3 1/2"	Metal	5" CP	Round	6
3B	D60991	3 1/2"	Metal	5" PB	Round	6
4B	D60996	3 1/2"	Metal	5" NB	Round	6
5KK	C37810	3 1/2"	Metal	5" NB	Round	6

### No Hub Drain Bodies

FITS SLOT #	PART NO.	IPS SIZE	PAN	SPUD	HEIGHT	QTY
X37	D67200	2"	7"	3 1/2"	3 3/8"	6
X6	D65102	2"	7"	3 1/2"	2 1/2"	6

### Cess Pool Drain

FITS SLOT #	PART NO.	SIZE	STRAINER SIZE / MATERIAL	SPUD	HEIGHT	QTY
X18	D76703	3"	7" CI	Round	4 1/16"	4

### No Caulk Drain Bodies

FITS SLOT #	PART NO.	SIZE	PAN	SPUD	HEIGHT	QTY
X1	D65002	2"	7"	3 1/2"	2 1/2"	6

### Gasket Connection Base

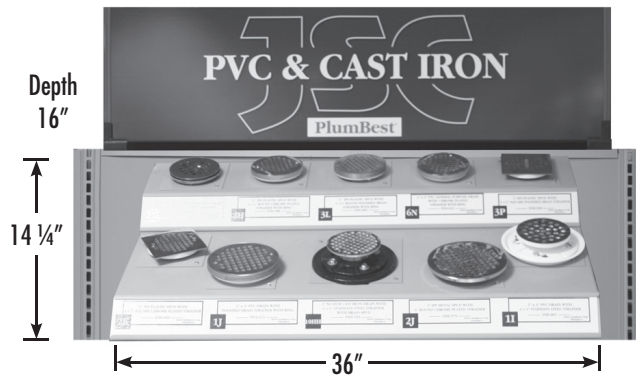
FITS SLOT #	PART NO.	S.V. BASE x SPUD	HEIGHT	QTY
10K	D62350	4" x 3 1/2" IPS	5 1/2"	6

### Accessories

FITS SLOT #	PART NO.	DESCRIPTION	QTY
-	D65103	3" NH drain base with clamp ring	6

## Recommended Items For Residential Display

Display Part No. Q01002



FITS SLOT #	PART NO.	IPS SIZE	SPUD MATERIAL	STRAINER/COVER SIZE / MATERIAL	STRAINER DIAMETER	QTY
2H	D60981	2"	Metal	4" CP	Round	6
3L	D60982	2"	Metal	4" PB	Round	6
2K	D50989	2"	Plastic	4" CP	Square	6
3P	D50990	2"	Plastic	4" PB	Square	6
2J	D60970	2"	Metal	6" CP	Round	6
1D	D40140	2"	Brass	SS	Round	12
10HH	D60103	2"	Cast Iron	4" SS	Round	6
1I	D50001	2" x 3"	Plastic	Bolt down 4" SS	Round	6
6N	D54022	2" x 3"	Plastic	4" CP with ring	Round	6
1J	D54112	3" x 4"	Plastic	4" PB with ring	Round	6
-	D40003	-	-	PB repl. strainer	Round	6
-	D40005	-	-	SS repl. strainer	Round	6
-	D40009	-	-	White Plastic repl. strainer	Round	6

## Recommended Items For PVC Display

Display Part No. Q01000



FITS SLOT #	PART NO.	SIZE	SPUD MATERIAL	STRAINER SIZE / MATERIAL	STRAINER DIAMETER	QTY
1M	D56211		Plastic	5" SS	Round	6
2AA	D56216		Plastic	5" CP	Round	6
3S	D56212		Plastic	5" PB	Round	6
4N	D56214		Plastic	5" NB	Round	6
5FF	D59945		Plastic	5" NB	Round	6
4B	D60996		Metal	5" NB	Round	6

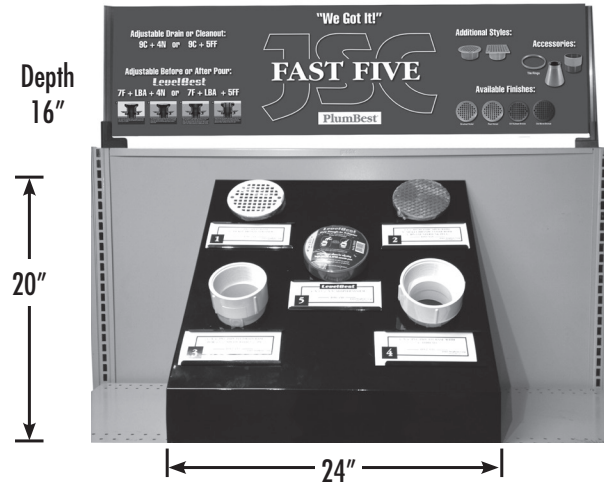
FITS SLOT #	PART NO.	CONNECTION SIZE	BASE MATERIAL	SPUD SIZE	PRIMER TAP	QTY
7	D52003	4"	Hub Fit	3 1/2"	-	6
8	D49804	3" x 4"	HD	3 1/2" with 1/2" plug		10
9C	D52451	3" x 4"	Pipe Fit	3 1/2" with 1/2" plug		12
10B	D52452	4"	Over Pipe Fit	3 1/2" with 1/2" plug		6

**Accessories**

FITS SLOT #	PART NO.	DESCRIPTION	QTY
-	D49801	2" x 3" HD drain base w/ 3 1/2" spud size and primer tap	6
-	C60822	5" PB ring	6
-	C60823	5" NB ring	6
-	C60819	5" CP ring	6

## Fast Five Drain Display

Display Part No. Q01555



FITS SLOT #	PART NO.	SIZE	SPUD MATERIAL	STRAINER SIZE / MATERIAL	STRAINER DIAMETER	QTY
1	D56214	3-1/2"	Plastic	5" NB Strainer	Round	20
2	D59945	3-1/2"	Plastic	5" NB Cover	Round	20

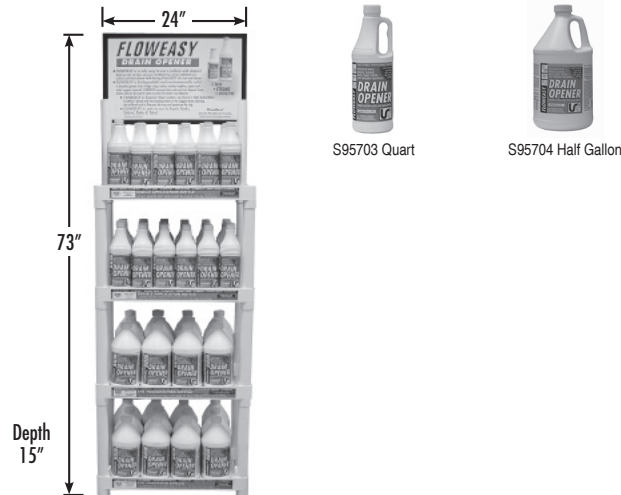
FITS SLOT #	PART NO.	CONNECTION SIZE	BASE	SPUD SIZE	PRIMER TAP	QTY
3	D52451	3" x 4"	Pipe Fit	3 1/2" with 1/2" plug		15
4	D52391	3" x 4"	Pipe Fit	4" with 1/2" plug		10
5	D50450	4" x 3-1/2" x 5"	LevelBest Adpt.	3 1/2"	—	10
—	D49804	3" x 4"	Heavy Duty	3 1/2" with 1/2" plug		5

**Accessories**

FITS SLOT #	PART NO.	DESCRIPTION	QTY
-	D60996	3-1/2" Metal spud with 5" NB Strainer	5
-	C60805	5" NB cast coverall strainer	5
-	C60503	5" NB cast cleanout cover	5
-	C60823	5" NB ring	5
-	F65400	4" Funnel	2

## Floweazy Drain Opener

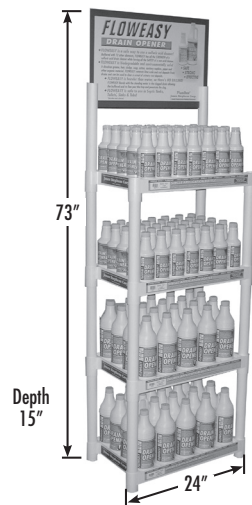
Display Part No. S95994



PART NO.	DESCRIPTION	QTY
S95703	Floweazy Drain Opener (Quart)	72 + 12 FREE
S95704	Floweazy Drain Opener (1/2 Gallon)	24
S95900	4 Shelf White Plastic Display Rack w/Header	1

## Floweazy Drain Opener

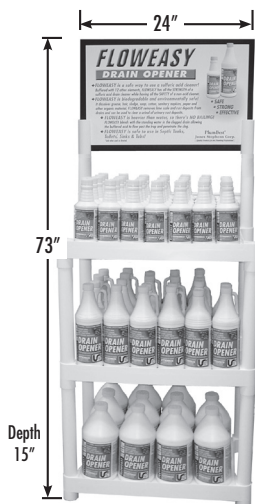
Display Part No. S95995



PART NO.	DESCRIPTION	QTY
S95701	Floweazy Drain Opener (Pint)	96
S95703	Floweazy Drain Opener (Quart)	48
S95900	4 Shelf White Plastic Display Rack w/Header	1

## Floweazy Drain Opener

Display Part No. S95920



PART NO.	DESCRIPTION	QTY
S95701	Floweazy Drain Opener (Pint)	48 + 6 FREE
S95703	Floweazy Drain Opener (Quart)	24
S95704	Floweazy Drain Opener (1/2 Gallon)	12
S95900	White Plastic Display Rack w/Header	1



## Floweazy Drain Opener (36 qt)

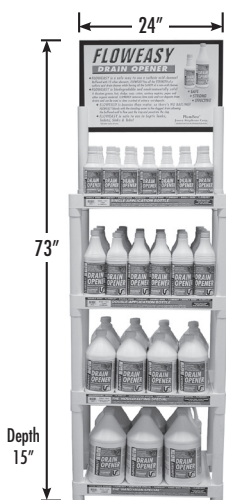
Display Part No. S95968



PART NO.	DESCRIPTION	QTY
S95703	Floweazy Drain Opener (Quart)	36
S95900	White Plastic Display Rack w/Header	1

## Floweazy Drain Opener

Display Part No. S95999



PART NO.	DESCRIPTION	QTY
S95701	Floweazy Drain Opener (Pint)	36
S95703	Floweazy Drain Opener (Quart)	24
S95704	Floweazy Drain Opener (1/2 Gallon)	12
S95705	Floweazy Drain Opener (Gallon)	8
S95900	4 Shelf White Plastic Display Rack w/Header	1

## Coil Cleaner

Display Part No. Q01COIL



PART NO.	DESCRIPTION	QTY
S95721	A.C. Coil Cleaner (Quart/RTU)	24
S95722	Condenser Coil Cleaner (Gallon/Concentrate)	8
S95725	Condenser Coil Cleaner (Gallon/RTU)	8
S95900	White Plastic Display Rack w/Header	1



# Wypall® Waterless Handwipes

Display Part No. B05008

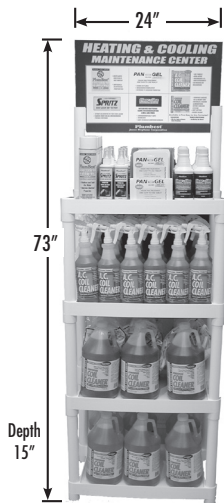


B05007

PART NO.	DESCRIPTION	QTY
B05007	50-count Dispenser Tub	32

# Heating & Cooling Maintenance Assort.

Display Part No. S95967



PART NO.	DESCRIPTION	QTY
S95721	AC (Inside) Coil Cleaner Ready-to-Use	12
S95722	AC (Outside) Coil Cleaner Concentrate	8
S95725	AC (Outside) Coil Cleaner Ready-to-Use	8
S95732	PlumBest Electrical Lubricant	12
S95734	Clear-A-Line Condensate Line Treatment	12
S95736	Spritz Gas Leak Detector	12
S95738	Pan-Gel Condensation Pan Tablet	12
S95900	4 Shelf White Plastic Display Rack w/Header	1

