

**SECTION T - TUBULAR**

Chrome Plated ..... 317-322

Rough Brass..... 323

PVC Plastic ..... 324-327

ABS Plastic ..... 328-329

Bath Wastes..... 330

Lav Drains & Pop Ups..... 331-332

Waste Connectors ..... 333

Basket Strainers..... 334-335

Escutcheons ..... 336





### Chrome Plated Brass P-Traps



- Heavy zinc nuts
- Shallow escutcheon
- Less cleanout

PART NO.	SIZE	GAUGE	CTN/MSTR
P38001	1-1/4"	22	1/30
P38002	1-1/4"	20	1/30
P38003	1-1/4"	17	1/30
P38004	1-1/2"	22	1/30
P38005	1-1/2"	20	1/30
P38006	1-1/2"	17	1/30

### Chrome Plated Brass P-Traps



- Brass nuts
- Shallow escutcheon
- Less cleanout

PART NO.	SIZE	GAUGE	CTN/MSTR
P38091	1-1/4"	22	1/30
P38007	1-1/4"	20	1/30
P38138	1-1/4" x 1-1/2"	17	1/30
P38092	1-1/4"	17	1/30
P38093	1-1/2"	22	1/30
P38008	1-1/2"	20	1/30
P38094	1-1/2"	17	1/30

### Chrome Plated Brass P-Traps



- Brass nuts
- Box escutcheon
- Less cleanout

PART NO.	SIZE	GAUGE	CTN/MSTR
P38003B	1-1/4"	17	1/30
P38005B	1-1/2"	20	1/30
P38006B	1-1/2"	17	1/30

### Chrome Plated Brass P-Traps



- Heavy zinc nuts
- With cleanout
- Bell escutcheon

PART NO.	SIZE	GAUGE	CTN/MSTR
P38002B	1-1/4"	20	1/30

### Boston Style P-Trap



- Brass nuts
- With cleanout
- Box escutcheon

PART NO.	SIZE	GAUGE	CTN/MSTR
P38142	1-1/4" x 1-1/2"	17	1/30

### Chrome Plated Brass P-Traps



- Zinc nuts
- Shallow escutcheon
- With cleanout

PART NO.	SIZE	GAUGE	CTN/MSTR
P38009	1-1/4"	20	1/30
P38009B (box esc.)	1-1/4"	20	1/30
P38011	1-1/2"	20	1/30

### Chrome Plated Brass P-Traps



- Brass nuts
- Shallow escutcheon
- With cleanout

PART NO.	SIZE	GAUGE	CTN/MSTR
P38010	1-1/4"	17	1/30
P38012	1-1/2"	17	1/30

### Chrome Plated Brass P-Traps



- Brass nuts
- Box escutcheon
- With cleanout

PART NO.	SIZE	GAUGE	CTN/MSTR
P38010B	1-1/4"	17	1/30
P38012B	1-1/2"	17	1/30

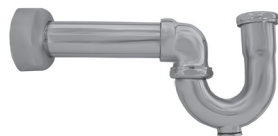
### Chrome Plated Brass P-Traps



- Brass nuts
- With cleanout
- Semi- cast commercial
- Shallow escutcheon

PART NO.	SIZE	GAUGE	CTN/MSTR
J37124	1-1/4"	17	1/30
J37150	1-1/2"	17	1/30

**Sink Trap w/Sweat Connection**



- Brass nuts
- Box escutcheon
- With cleanout

PART NO.	SIZE	GAUGE	CTN/MSTR
P38140	1-1/2"	17	1/30

**Sink Trap w/ABS Adapter**



- Brass nuts
- Box escutcheon
- With cleanout

PART NO.	SIZE	GAUGE	CTN/MSTR
P38141	1-1/2"	17	1/20

**Chrome Plated Brass S-Traps**



- Zinc nuts
- Shallow escutcheon
- Less cleanout

PART NO.	SIZE	GAUGE	CTN/MSTR
P38013	1-1/4"	22	1/15
P38014	1-1/2"	22	1/15

**T Chrome Plated Brass S-Traps**



- Brass nuts
- Box escutcheon
- Less cleanout

PART NO.	SIZE	GAUGE	CTN/MSTR
P38095	1-1/4"	20	1/15
P38096	1-1/2"	20	1/15
P38137	1-1/4"	17	1/15
P38097	1-1/2"	17	1/50

**Chrome Plated Brass J-Bend**



- Heavy zinc nuts
- Slip Joint
- Less cleanout

PART NO.	SIZE	GAUGE	CTN/MSTR
P38015	1-1/4"	22	1/36
P38016	1-1/4"	20	1/36
P38017	1-1/4"	17	1/36
P38018	1-1/2"	22	1/36
P38019	1-1/2"	20	1/36
P38020	1-1/2"	17	1/36

**Chrome Plated Brass J-Bend w/Cleanout**



- Brass nuts
- Slip joint
- With cleanout

PART NO.	SIZE	GAUGE	CTN/MSTR
P38021	1-1/4"	17	1/36
P38022	1-1/2"	17	1/36

**Chrome Plated Brass J-Bend w/Cleanout**



- Heavy zinc nuts
- Slip joint
- Less cleanout

PART NO.	SIZE	GAUGE	CTN/MSTR
P38113	1-1/4"	20	1/60
P38114	1-1/2"	20	1/60

**Chrome Plated Brass J-Bend**



- Captured brass nuts
- Washer joint
- Less cleanout

PART NO.	SIZE	GAUGE	CTN/MSTR
P38107	1-1/4"	22	1/60
P38108	1-1/4"	20	1/60
P38109	1-1/4"	17	1/60
P38110	1-1/2"	22	1/60
P38111	1-1/2"	20	1/60
P38112	1-1/2"	17	1/60

**Chrome Plated Brass L.A. Pattern Sink Trap**



- P38099 and P38100 with cast brass elbows
- Brass nuts
- Less cleanout

PART NO.	SIZE	GAUGE	CTN/MSTR
P38098	1-1/2"	22	1/50
P38099	1-1/2"	20	1/50
P38100	1-1/2"	17	1/50

### Chrome Plated Brass Repair Traps



- Heavy zinc nuts
- Less cleanout

PART NO.	SIZE	GAUGE	CTN/MSTR
P38101	1-1/4"	22	1/60
P38102	1-1/4"	20	1/60
P38103	1-1/2"	22	1/60
P38104	1-1/2"	20	1/60

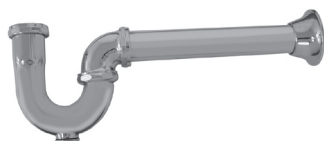
### Chrome Plated Brass Repair Traps



- Brass nuts
- Less cleanout

PART NO.	SIZE	GAUGE	CTN/MSTR
P38105	1-1/4"	17	1/60
P38106	1-1/2"	17	1/60

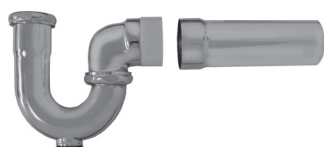
### Milwaukee Style Trap



- Brass nuts
- 10" Arm
- Cast elbow
- With cleanout

PART NO.	SIZE	GAUGE	CTN/MSTR
P38129	1-1/2"	17	1/30

### Sink Trap with PVC Adapter



- Box escutcheon
- PVC adapter
- Brass nuts
- With cleanout

PART NO.	SIZE	GAUGE	CTN/MSTR
P38130	1-1/2"	17	1/20

### Chrome Brass P-Trap



- Bell escutcheon
- Brass nuts
- Less cleanout

PART NO.	SIZE	GAUGE	CTN/MSTR
P38150	1-1/4"	17	1/30

### Brass Slip Joint End Outlet Tee Only



- Zinc nuts
- 4" Tailpiece
- No baffle

PART NO.	SIZE	GAUGE	CTN/MSTR
P38023	1-1/2"	22	1/50
P38024	1-1/2"	20	1/50

### Brass Direct Connection End Outlet Waste



- Zinc nuts
- 4" Tailpiece
- No baffle

PART NO.	SIZE	GAUGE	CTN/MSTR
P38025	1-1/2" x 16"	22	1/20
P38026	1-1/2" x 16"	20	1/20

### Brass Slip Joint End Outlet Waste



- Zinc nuts
- 4" Tailpiece
- No baffle

PART NO.	SIZE	GAUGE	CTN/MSTR
P38027	1-1/2" x 16"	22	1/20
P38028	1-1/2" x 16"	20	1/20

### Brass Slip Joint Center Outlet Tee



- Zinc nuts
- 4" Tailpiece
- No baffle

PART NO.	SIZE	GAUGE	CTN/MSTR
P38029	1-1/2"	20	12/120

### Brass Slip Joint Center Outlet Waste



- Zinc nuts
- 4" Tailpiece
- No baffle

PART NO.	SIZE	GAUGE	CTN/MSTR
P38030	1-1/2" x 16"	22	1/20
P38031	1-1/2" x 16"	20	1/20

### Brass Direct Connection Center Outlet Waste



- Zinc nuts
- 4" Tailpiece
- No baffle

PART NO.	SIZE	GAUGE	CTN/MSTR
P38032	1-1/2" x 16"	22	1/20
P38033	1-1/2" x 16"	20	10/100

### Brass Slip Joint Waste Arm



- Zinc nuts
- Bagged

PART NO.	SIZE	GAUGE	CTN/MSTR
P38034	1-1/4" x 6"	22	10/100
P38035	1-1/4" x 8"	22	10/50
P38036	1-1/4" x 12"	22	10/50
P38037	1-1/4" x 16"	22	10/50
P38038	1-1/2" x 8"	22	10/100
P38039	1-1/2" x 12"	22	10/50
P38040	1-1/2" x 16"	22	10/50
P38238	1-1/2" x 7"	17	10/50

### Chrome Plated Brass Wall Bend



- Bagged

PART NO.	SIZE	GAUGE	CTN/MSTR
P38041	1-1/4" x 7"	22	10/100
P38042	1-1/4" x 7"	20	10/100
P38115	1-1/4" x 7-1/2"	17	10/100
P38043	1-1/2" x 7-1/2"	22	10/100
P38044	1-1/2" x 7-1/2"	20	10/100
P38116	1-1/2" x 7-1/2"	17	10/100

### CP Brass Direct Connection Waste Arm



- Bagged

PART NO.	SIZE	GAUGE	CTN/MSTR
P38045	1-1/2" x 7"	22	10/100
P38117	1-1/2" x 15"	22	10/100
P38217	1-1/2" x 15"	17	1/25

### Brass Slip Joint Double Offset



- Zinc nuts
- Bagged

PART NO.	SIZE	GAUGE	CTN/MSTR
P38046	1-1/4" x 12"	22	10/100
P38047	1-1/2" x 12"	22	10/50

### Brass Sink Tailpiece



- Bagged

PART NO.	SIZE	GAUGE	CTN/MSTR
P38048	1-1/4" x 6"	22	10/100
P38049	1-1/4" x 8"	22	10/100
P38050	1-1/4" x 12"	22	10/100
P38051	1-1/4" x 6"	17	10/100
P38052	1-1/4" x 8"	17	10/100
P38053	1-1/4" x 12"	17	10/50
P38054	1-1/2" x 4"	22	10/100
P38055	1-1/2" x 6"	22	10/100
P38056	1-1/2" x 8"	22	10/100
P38057	1-1/2" x 12"	22	10/50
P38058	1-1/2" x 6"	17	10/100
P38059	1-1/2" x 8"	17	10/100
P38060	1-1/2" x 12"	17	10/50

### Brass Double Flange Tailpiece



- Bagged

PART NO.	SIZE	GAUGE	CTN/MSTR
P38061	1-1/2" x 16"	22	10/50

### Brass Direct Connect Dishwasher Tailpiece



- Zinc nut
- Bagged

PART NO.	SIZE	GAUGE	CTN/MSTR
P38063	1-1/2" x 6" w/3/4" branch	22	10/100
P38064	1-1/2" x 8" w/3/4" branch	22	10/50
P38163	1-1/2" x 6" w/1/2" branch	22	5/30
P38148	1-1/2" x 8" w/1/2" branch	22	10/100

### Threaded Connection Dishwasher Tailpiece



PART NO.	SIZE	GAUGE	CTN/MSTR
P38166	1-1/2" x 6" w/1/2" branch	22	1/50

### Slip Joint Tailpiece



- Zinc nut
- Bagged

PART NO.	SIZE	GAUGE	CTN/MSTR
P38164	1-1/2" x 8" w/3/4" branch	22	10/50
P38143	1-1/2" x 8" w/1/2" branch	22	10/50

### Brass Double Slip Joint Extension Tube



- Zinc nuts
- Bagged

PART NO.	SIZE	GAUGE	CTN/MSTR
P38062	1-1/2" x 16"	22	10/50
P38162	1-1/4" x 16"	22	10/50

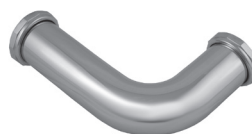
### Chrome Plated Brass Slip Joint Extension Tube



- Zinc nut
- Bagged

PART NO.	SIZE	GAUGE	CTN/MSTR
P38065	1-1/4" x 6"	22	10/100
P38066	1-1/4" x 8"	22	10/100
P38067	1-1/4" x 12"	22	10/50
P38121	1-1/4" x 6"	20	10/100
P38122	1-1/4" x 8"	20	10/100
P38068	1-1/4" x 12"	20	10/50
P38118	1-1/4" x 6"	17	10/100
P38119	1-1/4" x 8"	17	10/100
P38120	1-1/4" x 12"	17	10/50
P38069	1-1/2" x 6"	22	10/100
P38070	1-1/2" x 8"	22	10/100
P38071	1-1/2" x 12"	22	25/50
P38123	1-1/2" x 6"	20	10/100
P38124	1-1/2" x 8"	20	10/100
P38125	1-1/2" x 12"	20	10/50
P38126	1-1/2" x 6"	17	10/100
P38127	1-1/2" x 8"	17	10/100
P38128	1-1/2" x 12"	17	10/50

### Chrome Plated Closet Flush Elbow w/Nuts



- Zinc nuts
- Bagged

PART NO.	SIZE	GAUGE	CTN/MSTR
P38257	2" x 5" x 7"	20	1/25

### Chrome Plated Disposer Kit



- Zinc nuts

PART NO.	SIZE	GAUGE	CTN/MSTR
P38165	1-1/2" x 13"	17	1/20

### Brass Solder Extension Tube



PART NO.	SIZE	GAUGE	CTN/MSTR
P38072	1-1/4" x 6"	22	10/100
P38073	1-1/4" x 8"	22	10/100
P38074	1-1/4" x 12"	22	10/100
P38131	1-1/4" x 6"	20	10/100
P38132	1-1/4" x 8"	20	10/100
P38133	1-1/4" x 12"	20	10/100
P38075	1-1/2" x 6"	22	10/100
P38076	1-1/2" x 8"	22	10/100
P38077	1-1/2" x 12"	22	10/100
P38134	1-1/2" x 6"	20	10/100
P38135	1-1/2" x 8"	20	10/100
P38136	1-1/2" x 12"	20	10/100

### Double Slip Fittings



- Zinc nuts
- Chrome plated brass
- 22 gauge

PART NO.	SIZE	DESCRIPTION	CTN/MSTR
T74001	1-1/4"	Coupling	10/100
T74002	1-1/2"	Coupling	10/100
T74003	1-1/4"	90° Ell	10/100
T74004	1-1/2"	90° Ell	10/100
T74005	1-1/4"	45° Ell	10/100
T74006	1-1/2"	45° Ell	10/100

### Brass Threaded Extension Tube



• Bagged

PART NO.	SIZE	GAUGE	CTN/MSTR
P38078	1-1/4" x 6"	20	10/100
P38079	1-1/4" x 8"	20	10/100
P38080	1-1/4" x 12"	20	10/50
P38081	1-1/2" x 6"	20	10/100
P38082	1-1/2" x 8"	20	10/100
P38083	1-1/2" x 12"	20	10/50
P38084	1-1/4" x 6"	17	10/100
P38085	1-1/4" x 8"	17	10/100
P38086	1-1/4" x 12"	17	10/50
P38087	1-1/2" x 6"	17	10/100
P38088	1-1/2" x 8"	17	10/50
P38089	1-1/2" x 12"	17	10/50

### Slip Joint Tee



- Zinc nuts
- Chrome plated satin finish cast brass

PART NO.	DESCRIPTION	CTN/MSTR
C74105	1-1/2" x 1-1/2" x 1-1/2"	10/60



### Rough Brass P-Trap



- Less cleanout
- Deep flange
- Brass Nuts

PART NO.	SIZE	GAUGE	CTN/MSTR
P38406	1-1/2"	17	1/30

### Slip Joint Extension Tube



- Brass nut

PART NO.	SIZE	GAUGE	CTN/MSTR
P38420	1-1/4" x 12"	17	10/50
P38428	1-1/2" x 12"	17	10/50

### Rough Brass Direct Connection Waste Arm



PART NO.	SIZE	GAUGE	CTN/MSTR
P38444	1-1/2" x 7"	17	1/100
P38447	1-1/2" x 15"	17	1/50

### Double Threaded Extension Tube



PART NO.	SIZE	GAUGE	CTN/MSTR
P38486	1-1/4" x 12"	17	10/100
P38489	1-1/2" x 12"	17	10/100

### Rough Brass Flanged Tailpiece



PART NO.	SIZE	GAUGE	CTN/MSTR
P38454	1-1/2" x 4"	17	10/50
P38458	1-1/2" x 6"	17	10/100
P38459	1-1/2" x 8"	17	10/100
P38460	1-1/2" x 12"	17	10/50

### Rough Brass Slip Joint Tailpiece w/ 1/2" Sweat Branch



- Brass nut

PART NO.	SIZE	GAUGE	CTN/MSTR
P38443	1-1/2" x 8"	17	1/50

**T**

**PVC P-Trap**



PART NO.	SIZE	CTN/MSTR
P37001	1-1/4"	25/100
P37002	1-1/2"	10/50

**PVC P-Trap w/Marvel; PVC P-Trap w/Solvent Weld Marvel**



• Master trap

PART NO.	SIZE	CTN/MSTR
P37003	1-1/2" slip joint	25/50
P37032	1-1/2" solvent weld	10/100

**PVC Slip Joint Center Outlet Waste**



• Baffle tee

PART NO.	SIZE	CTN/MSTR
P37004	1-1/2"	10/40

**PVC Direct Connection Center Outlet Waste**



• Baffle tee

PART NO.	SIZE	CTN/MSTR
P37005	1-1/2"	10/40

**PVC Center Outlet Tee Only**



- Baffle
- Tailpiece included
- May be used as slipjoint or direct connect

PART NO.	SIZE	CTN/MSTR
P37006	1-1/2"	25/100

**PVC Slip Joint End Outlet Waste**



• Baffle

PART NO.	SIZE	CTN/MSTR
P37007	1-1/2" x 16"	10/40
P37034	1-1/2" x 16" Adjustable arm	10/40

**PVC Slip Joint End Outlet Waste**



- 1/2" branch
- Adjustable arm

PART NO.	SIZE	CTN/MSTR
P37042	1-1/2"	10/40

**PVC Direct Connection End Outlet Waste**



• Baffle tee

PART NO.	SIZE	CTN/MSTR
P37008	1-1/2"	10/50
P37036	1-1/2" telescoping	10/50

**PVC Slip Joint End Outlet Tee Only w/Baffle**



• Baffle

PART NO.	SIZE	CTN/MSTR
P37009	1-1/2"	25/100

T

### PVC Slip Joint S-Trap



PART NO.	SIZE	CTN/MSTR
P37010	1-1/4"	15/60
P37011	1-1/2"	15/60

### PVC Slip Joint Dishwasher Tailpiece



PART NO.	SIZE	CTN/MSTR
P37012	1-1/2" x 8" x 1/2"	1/25
P37030	1-1/2" x 8" x 3/4"	5/25

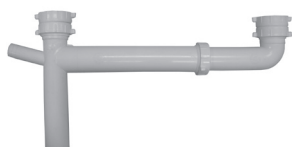
### PVC Direct Connection Dishwasher Tailpiece



• Slip joint or direct connect

PART NO.	SIZE	CTN/MSTR
P37013	1-1/2" x 8" x 1/2"	5/25
P37031	1-1/2" x 8" x 3/4"	5/25

### Universal End Outlet Waste w/Dishwasher Connection



- 1-1/2" tubular; 16" maximum adjustment
- Baffle tee
- Slip joint or direct connect

PART NO.	SIZE	CTN/MSTR
P37040	1/2" branch	10/60
P37041	3/4" branch	10/60

### PVC Slip Joint Repair Trap



PART NO.	SIZE	CTN/MSTR
P37014	1-1/2"	1/80

### PVC Slip Joint J-Bend



PART NO.	SIZE	CTN/MSTR
P37015	1-1/2"	10/60

### PVC Slip Joint Waste Arm



PART NO.	SIZE	CTN/MSTR
P37016	1-1/2" x 16"	25/100

### PVC Direct Connection Waste Arm



PART NO.	SIZE	CTN/MSTR
P37017	1-1/2" x 16"	10/100

### PVC Slip Joint Extension Tube



PART NO.	SIZE	CTN/MSTR
P37018	1-1/2" x 16"	25/50
P37118	1-1/4" x 16"	10/100

### PVC Double Flange Extension



PART NO.	SIZE	CTN/MSTR
P37019	1-1/2" x 16"	25/100
P37037	1-1/4" x 16"	10/100

**PVC Slip Joint Extension Tube**



PART NO.	SIZE	CTN/MSTR
P37020	1-1/4" x 6"	25/100
P37021	1-1/2" x 8"	25/100
P37022	1-1/2" x 12"	25/100

**PVC Solvent Extension Tube**



PART NO.	SIZE	CTN/MSTR
P37023	1-1/4" x 8"	25/100
P37024	1-1/2" x 6"	25/100
P37025	1-1/2" x 12"	25/100

**PVC Flanged Tailpiece**



PART NO.	SIZE	CTN/MSTR
P37026	1-1/2" x 6"	25/200
P37027	1-1/2" x 8"	25/200
P37028	1-1/2" x 12"	25/200
P37029	1-1/2" x 16"	25/100
P37038	1-1/4" x 12"	25/200

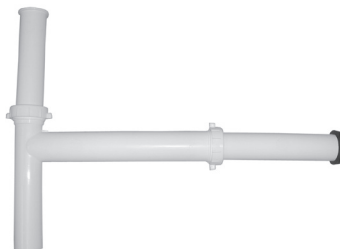
**1-1/2" PVC Direct Connection Disposer Kit w/13" Arm**



- Poly washers and wing nuts
- Disposer washer
- Baffle tee
- 6" Tailpiece

PART NO.	SIZE	CTN/MSTR
P37033	1-1/2" x 16"	10/50

**1-1/2" PVC Direct Connection Disposer Kit w/Adjustable Arm**



- Telescoping arm adjusts up to 16"
- Poly washers and wing nuts
- Disposer washer
- Baffle tee
- 6" tailpiece

PART NO.	SIZE	CTN/MSTR
P37035	1-1/2" x 16"	10/40

**PVC Slip Joint Tee**



PART NO.	SIZE	CTN QTY
P37400	1-1/2" with 1-1/4" washer	120

**PVC Double Slip Fittings**



PART NO.	SIZE	DESCRIPTION	CTN/MSTR
P37200	1-1/2"	Coupling	10/100
P37445	1-1/2"	45° Ell	1/100
P37490	1-1/2"	90° Ell	1/100

**Chrome Plated PVC P-Trap**



- Complete with nuts, washers, and escutcheon
- P36103 includes reducing washer

PART NO.	SIZE	CTN/MSTR
P36102	1-1/4"	1/50
P36103	1-1/2"	1/50

**Polished Brass PVC P-Traps**



- Slip joint
- Box escutcheon

PART NO.	SIZE	CTN/MSTR
P36101	1-1/2"	1/50

**T**

### ABS P-Trap



PART NO.	SIZE	CTN/MSTR
P39001	1-1/4"	10/100
P39002	1-1/2"	10/50

### ABS P-Trap w/Adapter



PART NO.	SIZE	CTN/MSTR
P39003	1-1/2" slip joint	1/50
P39032	1-1/2" solvent weld	10/50

### ABS Slip-Joint Center Outlet



PART NO.	SIZE	CTN/MSTR
P39004	1-1/2"	10/40

### ABS Direct Connection Center Outlet Waste



PART NO.	SIZE	CTN/MSTR
P39005	1-1/2"	10/40

### ABS Slip-Joint Center Outlet



PART NO.	SIZE	CTN/MSTR
P39006	1-1/2"	10/100

### ABS Slip-Joint End Outlet Waste



PART NO.	SIZE	CTN/MSTR
P39007	1-1/2" x 16"	20/40
P39034	1-1/2" x 16" adjustable	10/40

### ABS Direct Connection End Outlet Waste



PART NO.	SIZE	CTN/MSTR
P39008	1-1/2"	20/40

### ABS Slip Joint End Outlet Tee Only



PART NO.	SIZE	CTN/MSTR
P39009	1-1/2"	25/100

### ABS S-Trap



PART NO.	SIZE	CTN/MSTR
P39010	1-1/4"	15/60
P39011	1-1/2"	15/60

### ABS Slip Joint Dishwasher Tailpiece



PART NO.	SIZE	CTN/MSTR
P39012	1-1/2" x 8" x 1/2"	5/25
P39030	1-1/2" x 8" x 3/4"	5/25

**ABS Direct Connection Dishwasher Tailpiece**



PART NO.	SIZE	CTN/MSTR
P39013	1-1/2" x 8" x 1/2"	5/25
P39031	1-1/2" x 8" x 3/4"	5/25

**ABS Repair Trap**



PART NO.	SIZE	CTN/MSTR
P39014	1-1/2"	20/80

**ABS Slip Joint J-Bend**



PART NO.	SIZE	CTN/MSTR
P39015	1-1/2"	20/80

**ABS Slip Joint Waste Arm**



PART NO.	SIZE	CTN/MSTR
P39016	1-1/2" x 16"	25/100

**ABS Direct Connection Waste Arm**



PART NO.	SIZE	CTN/MSTR
P39017	1-1/2" x 16"	25/100

**ABS Slip Joint Extension Tube**



PART NO.	SIZE	CTN/MSTR
P39018	1-1/2" x 16"	10/50

**ABS Double Flange Extension**



PART NO.	SIZE	CTN/MSTR
P39019	1-1/2" x 16"	25/100

**ABS Slip Joint Extension Tube**



PART NO.	SIZE	CTN/MSTR
P39020	1-1/4" x 6"	10/100
P39021	1-1/2" x 8"	10/100
P39022	1-1/2" x 12"	25/100

**1-1/2" ABS Direct Connection Disposer Kit**



- Poly washer and wing nuts
- Disposer washer
- 6" Tailpiece

PART NO.	SIZE	CTN/MSTR
P39033	1-1/2" x 16"	10/50

**1-1/2" ABS Direct Connection Disposer Kit w/Adjustable Arm**



- Baffle tee
- 6" Tailpiece
- Disposer washer
- Poly washers and wing nuts
- Telescoping arm adjusts up to 16"

PART NO.	SIZE	CTN/MSTR
P39035	1-1/2" x 16"	1/40

**ABS Universal End Outlet Waste w/Dishwasher Connection**



- 1-1/2" tubular; 16" maximum adjustment
- Slip joint or direct connection
- Baffle tee

PART NO.	SIZE	CTN/MSTR
P39040	1/2" branch	10/40
P39041	3/4" branch	60

**ABS Solvent Extension Tube**

PART NO.	SIZE	CTN/MSTR
P39023	1-1/4" x 8"	25/100
P39024	1-1/2" x 6"	25/100
P39025	1-1/2" x 12"	25/100

**ABS Flanged Tailpiece**

PART NO.	SIZE	CTN/MSTR
P39026	1-1/2" x 6"	25/200
P39027	1-1/2" x 8"	25/200
P39028	1-1/2" x 12"	25/200
P39029	1-1/2" x 16"	25/100

**Chrome Plated ABS P-Trap**

- Slip joint connection
- Box pattern escutcheon

PART NO.	SIZE	CTN/MSTR
P36104	1-1/4"	10/50
P36105	1-1/2"	10/50

**PVC & ABS Tubular Bath Waste Kits**

- Heavy walled PVC and ABS tubular
- Available in polished chrome and pvd protected polished brass and satin nickel
- 2-hole face plates with wrap-around gaskets and tapped holes
- 1-1/2" IPS threaded drain shoe
- Overflow elbow designed to accommodate B07-202 test kit
- Wing nuts and poly washers
- Come packaged in individual box
- UPC listed

**1-1/2" Lift And Turn Bath Waste Tubular Kit**



PART NO.	FINISH	FACE PLATE	MATERIAL	CTN	QTY
P37500	CP	2-hole	PVC	20	
P39500	CP	2-hole	ABS	20	
P37502	SN	2-hole	PVC	20	
P39502	SN	2-hole	ABS	20	

**1-1/2" Brass Friction Lift Bath Waste Tubular Kit**



PART NO.	FINISH	FACE PLATE	MATERIAL	CTN	QTY
P37503	CP	2-hole	PVC	20	
P39503	CP	2-hole	ABS	20	
P37505	SN	2-hole	PVC	20	
P39505	SN	2-hole	ABS	20	

**1-1/2" Brass Toe Touch Bath Waste Tubular Kit**



PART NO.	FINISH	FACE PLATE	MATERIAL	CTN	QTY
P37506	CP	2-hole	PVC	20	
P39506	CP	2-hole	ABS	20	
P37508	SN	2-hole	PVC	20	
P39508	SN	2-hole	ABS	20	

**1-1/2" Trip Lever Bath Waste Tubular Kit**



PART NO.	FINISH	FACE PLATE	MATERIAL	CTN	QTY
P37509	CP	2-hole	PVC	20	
P39509	CP	2-hole	ABS	20	
P37511	SN	2-hole	PVC	20	
P39511	SN	2-hole	ABS	20	

**PVC & ABS Tubular Cable Drive Bath Waste 1/2 Kits**

- Available in polished chrome and pvd protected polished brass and satin nickel
- 1-1/2" IPS threaded drain shoe
- UPC listed

**1-1/2"- 27" Cable Drive**



PART NO.	FINISH	MATERIAL	CTN	QTY
P37512	CP	PVC	20	
P39512	CP	ABS	20	
P37514	SN	PVC	20	
P39514	SN	ABS	20	

**1-1/2"- 35" Cable Drive**



PART NO.	FINISH	MATERIAL	CTN	QTY
P37515	CP	PVC	20	
P39515	CP	ABS	20	
P37517	SN	PVC	20	
P39517	SN	ABS	20	

**1-1/2"- 45" Cable Drive**



PART NO.	FINISH	MATERIAL	CTN	QTY
P37518	CP	PVC	20	
P39518	CP	ABS	20	
P37520	SN	PVC	20	
P39520	SN	ABS	20	

**T**



### Commercial Lav Drain



- Polished chrome plated brass
- 17 Gauge 1-1/4" tailpiece; 6" long
- Mack washer and brass locknut

PART NO.	SIZE	CTN/MSTR
D70100	1-1/4"	1/50

### Handicap Style Lav Drain



- Polished chrome plated brass
- Twin 90° construction
- 17 Gauge 1-1/4" tailpiece; cast brass elbows
- Mack washer and brass locknut

PART NO.	SIZE	CTN/MSTR
D70101	1-1/4"	1/25

### Commercial Handicap Drain w/Elbow



- Polished chrome plated brass; cast brass elbow
- Complete with gaskets and brass locknuts
- 1-1/4" Female thread

PART NO.	SIZE	CTN/MSTR
D70102	1-1/4"	1/25

### Chrome Plated Brass Pop-Up Assembly



- All metal construction
- Tool free locknut and ballrod nut
- Boxed

PART NO.	DESCRIPTION	CTN/MSTR
P35001	CP pop-up assembly	1/50

### Polished Brass Pop-Up Assembly



- PVD durable finish
- Tool free locknut and ballrod nut
- All metal construction
- 1-1/4" Tubular
- Boxed

PART NO.	DESCRIPTION	CTN/MSTR
P35002	PB pop-up assembly	1/50

### ABS Pop Up Assembly



- Carded

PART NO.	DESCRIPTION	CTN/MSTR
P35004	Grey plastic	6/30

### Chrome Plated ABS Pop Up Assembly



- Carded

PART NO.	DESCRIPTION	CTN/MSTR
P35005	Chrome plated plastic	6/30

### Brass P.O. Plug Drain



- With chain and stopper

PART NO.	SIZE	CTN/MSTR
D70103	1-1/4"	1/50

### Trap Primer Tailpiece



- 17 Gauge tubular chrome plated steel
- Sturdy one-piece construction eliminates leaks and cross-threading

PART NO.	SIZE	CTN/MSTR
T74010	1-1/4" x 8" threaded top	1/50
T74011	1-1/2" x 8" direct connection	1/50

### Plastic Slip Joint Nut



- White
- CARTON QUANTITIES ONLY

PART NO.	SIZE	CTN/MSTR
T83150	1-1/2" with wings	100/1200
T85125	1-1/4" x 1-1/4"	100/1200
T85150	1-1/2" x 1-1/2"	100/1200

### Plastic Slip Nut



- Replace fractured or stripped slip nuts without tubular disassembly
- Supplied with washer

PART NO.	SIZE	CTN/MSTR
T82125	1-1/4" Split nut	100/400
T82150	1-1/2" Split nut	100/400

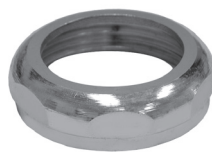
### Die Cast Zinc Slip Joint Nut



- Chrome plated
- CARTON QUANTITIES ONLY

PART NO.	IPS x SLIP TUBE	CTN/MSTR
T77125	1-1/4" x 1-1/4"	25/500
T77138	1-1/2" x 1-3/8"	25/300
T77150	1-1/2" x 1-1/2"	25/300
T77151	1-1/2" x 1-1/4"	25/300
T77152	2" x 1-1/2"	25/300
T77200	2" x 2"	25/200

### Chrome Plated Brass Slip Joint Nut



- Chrome plated
- CARTON QUANTITIES ONLY

PART NO.	IPS x SLIP TUBE	CTN/MSTR
T78125	1-1/4" x 1-1/4"	25/400
T78150	1-1/2" x 1-1/2"	25/400
T78151	1-1/2" x 1-1/4"	25/400
T78152	2" x 1-1/2"	25/400
T78200	2" x 2"	25/400

### Rough Brass Slip Joint Nut



- Heavy cast brass
- CARTON QUANTITIES ONLY

PART NO.	IPS x SLIP TUBE	CTN/MSTR
T84125	1-1/4" x 1-1/4"	25/300
T84150	1-1/2" x 1-1/2"	25/300
T84151	1-1/2" x 1-1/4"	25/300
T84200	2" x 2"	25/300

### Die Cast Slip Joint Nut & Washer



- Chrome plated nut packed with square cut rubber washer
- CARTON QUANTITIES ONLY

PART NO.	SIZE	CTN QTY
T77014	1-1/4" x 1-1/4"	25
T77012	1-1/2" x 1-1/2"	25
T77013	1-1/2" x 1-1/4"	25
T77020	2" x 2"	25

### Brass Slip Joint Nut & Washer



- Chrome plated nut packed with square cut rubber washer
- CARTON QUANTITIES ONLY

PART NO.	SIZE	CTN/MSTR
T78014	1-1/4" x 1-1/4"	25/400
T78012	1-1/2" x 1-1/2"	25/400
T78013	1-1/2" x 1-1/4"	25/400
T78020	2" x 2"	25/400

### Square Cut Rubber Slip Joint Washer



• CARTON QUANTITIES ONLY

PART NO.	NUT x TUBE	CTN/MSTR
T79125	1-1/4" x 1-1/4"	100/5600
T79150	1-1/2" x 1-1/2"	100/5600
T79151	1-1/2" x 1-1/4"	100/5600
T79200	2" x 2"	100/2400
T79201	2" x 1-1/2"	100/2400
T79152	1-1/2" x 1-1/4" cloth inserted	100/1000

### Poly Beveled Slip Joint Washer



• CARTON QUANTITIES ONLY

PART NO.	NUT x TUBE	CTN/MSTR
T80125	1-1/4" x 1-1/4"	100/5000
T80150	1-1/2" x 1-1/2"	100/5000
T80151	1-1/2" x 1-1/4"	100/5000
T80200	2" x 2"	100/5000

### LDP Blue Slip Joint Washer Washer



• CARTON QUANTITIES ONLY

PART NO.	NUT x TUBE	CTN QTY
T80135	1-1/4" x 1-1/4"	100
T80160	1-1/2" x 1-1/2"	100

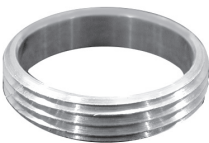
### Flanged Poly Tailpiece Washer



• CARTON QUANTITIES ONLY

PART NO.	NUT x TUBE	CTN QTY
T81150	1-1/2" x 1-1/2"	100
T79152	1-1/2" x 1-1/4" cloth inserted	100

### Marvel Rings



• Use on closet/urinal stub out adapter

PART NO.	FSWT x MIP	CTN/MSTR
B55004	1-1/4" SJ x 1-1/4" SWT	1/1000
B55005	1-1/2" SJ x 1-1/2" SWT	1/500
B55006	2" SJ x 2" SWT	1/500
B55007	1-1/2" SJ x 1-1/4" SWT	1/500

### PVC Marvel Adapter



• Thread x Hub

PART NO.	SIZE	CTN QTY
P37000	1-1/2" PVC	100
P39000	1-1/2" ABS	100

### Tray Plug



- Stainless steel body with die cast locknut
- Fits 1-1/2" bar sink
- Complete with washers and stopper

PART NO.	DESCRIPTION	CTN/MSTR
B02051	Tray Plug	1/100

### FIP x SLIP Waste Connector



- Brass body ferrule and nut; OD is copper tubular dimension
- MIP units are combination female sweat

PART NO.	FIP x OD	CTN/MSTR
T75125	1-1/4" x 1-1/4"	12/72
T75150	1-1/2" x 1-1/2"	12/72
T75151	1-1/2" x 1-1/4"	12/72

### MIP x SLIP Waste Connector



- Brass body ferrule and nut; OD is copper tubular dimension
- MIP units are combination female sweat

PART NO.	MIP x OD	CTN/MSTR
T76125	1-1/4" x 1-1/4"	12/72
T76150	1-1/2" x 1-1/2"	12/72
T76151	1-1/2" x 1-1/4"	12/72

### Flexible Trap Drain Connector



PART NO.	DESCRIPTION	CTN/MSTR
T06001	Connects 1-1/4"- 1-1/2" tubular to 1-1/4"- 1-1/2" tubular	1/180
T06002	Connects 1" DWV or 1-1/2" CTS to 1-1/4"- 1-1/2" tubular	1/100
T06003	Connects 1-1/2" DWV or CTS to 1-1/4"- 1-1/2" tubular	1/100
T06004	Connects 2" DWV to 1-1/4"- 1-1/2" tubular	1/100

**Duo Basket Strainer**



- 4-1/2" diameter to fit 3-1/2" drilling
- All stainless steel with zinc locknut
- Basket with rolled edge

PART NO.	DESCRIPTION	CTN/MSTR
S14001	SS Duo Basket Strainer	1/50

**Snap Lock Basket Strainer**



- 4-1/2" diameter to fit 3-1/2" drilling
- All stainless steel with zinc locknut
- Ball bearing basket with rolled edge (less tailpiece)

PART NO.	DESCRIPTION	CTN/MSTR
S14005	Snap lock basket strainer	1/50

**Flat Top Grid Strainer**



- 4-1/2" diameter to fit 3-1/2" drilling
- All stainless steel with zinc locknut (less tailpiece)

PART NO.	DESCRIPTION	CTN/MSTR
S14002	Flat top grid strainer	1/24

**Shallow Cup Duo Basket Strainer**



- 4-1/2" diameter to fit 3-1/2" drilling
- All stainless steel with zinc locknut
- Basket with rolled edge (less tailpiece)

PART NO.	DESCRIPTION	CTN/MSTR
S14006	Shallow cup duo strainer	1/50

**Twist & Lock Basket Strainer**



- 4-1/2" diameter to fit 3-1/2" drilling
- Screw-in basket (less tailpiece)

PART NO.	DESCRIPTION	CTN/MSTR
S14003	Twist & lock basket strainer	1/50
S14103	Replacement basket	1/50

**Stainless Steel Duo Basket Strainer**



- Stainless steel body and basket
- Neoprene stopper
- Spring style snap-in basket

PART NO.	DESCRIPTION	CTN/MSTR
S14606	SS duo basket strainer	1/50

**Stainless Steel Duo Post Style Basket Strainer**



- Stainless steel body and basket
- Polished inner cup
- Compare to JB250SS
- CP zinc post and slip nut
- Heavy duty rubber gasket and zinc locknut

PART NO.	DESCRIPTION	CTN/MSTR
S14251	SS Duo post style basket strainer	1/50

**CP Brass Duo Strainer**



- Beveled stopper w/o-ring seal
- Brass slip joint nut and lock nut
- Compare to Kohler K8801

PART NO.	DESCRIPTION	CTN/MSTR
S14007	CP brass duo strainer	1/25

**Deep Cup Basket Strainer**



- 4-1/2" diameter to fit 3-1/2" drilling
- All stainless steel with zinc locknut
- Basket with rolled edge (less tailpiece)

PART NO.	DESCRIPTION	CTN/MSTR
S14004	Deep cup basket strainer	1/50

**Chrome Plated Brass Duo Basket Strainer**



- Chrome plated brass body with stainless steel basket
- Heavy duty construction
- Neoprene stopper

PART NO.	DESCRIPTION	CTN/MSTR
S14250	CP brass duo basket strainer	1/50

T

### Quick Fit Stainless Steel Basket Strainer



- Minimizes installation time
- Triangle frame mounts to underside
- Fits virtually all sinks
- Durable stainless construction with brass nut
- For replacement basket use B03015

PART NO.	DESCRIPTION	CTN/MSTR
S14008	SS basket strainer	1/50

### Stainless Steel Deep Cup Basket Strainer



- Stainless steel body and basket
- Neoprene stopper
- Spring style snap-in basket

PART NO.	DESCRIPTION	CTN/MSTR
S14014	SS cup basket strainer	1/50

### Junior Duo Basket Strainer



- Stainless Steel body and basket with die cast locknut; 1-1/2" threads
- Complete with washers
- Fits 1-3/4" bar sink

PART NO.	DESCRIPTION	CTN/MSTR
B02050	Junior duo strainer	1/100
B02049	Replacement basket	100/500

### Flat Duplex Strainer



- Stainless steel body and strainer with die cast locknut
- Complete with washers
- Fits 1-1/2" bar sink

PART NO.	DESCRIPTION	CTN/MSTR
B02052	Flat duplex strainer	1/100

### Deep Junior Duo Basket Strainer



- For 2" and 2-1/2" deep outlets and bar sinks

PART NO.	DESCRIPTION	CTN/MSTR
B02102	2" Deep basket strainer	1/100
B02103	Replacement basket	1/250

### Economy Replacement Basket Strainer



- ABS post
- Stainless steel basket

PART NO.	DESCRIPTION	CTN/MSTR
B03015	Replacement basket strainer	10/200

### Fit-All Basket Strainer



- Stainless steel

PART NO.	DESCRIPTION	CTN/MSTR
B03010	Fit-all strainer	20/200

### Snap N Lock Stainless Steel Basket Strainer



- Brass slip joint and lock nuts

PART NO.	DESCRIPTION	CTN/MSTR
S14010	Snap N Lock Stainless Steel Basket Strainer	1/50

## Low Pattern-Tubular Sure Grip Escutcheons



- Chrome plated steel
- Carton quantities only

PART NO.	SIZE	FLANGE OD	CTN/MSTR
E03125	1-1/4" Tubular	2-7/8"	25/1200
E03150	1-1/2" Tubular	2-7/8"	25/1200
E03200	2" Tubular	3-1/2"	25/2500

## Box Pattern-Tubular Sure Grip Escutcheons



- Chrome plated steel
- Carton quantities only

PART NO.	SIZE	FLANGE OD	CTN/MSTR
E04125	1-1/4" Tubular	3"	5/300
E04150	1-1/2" Tubular	3"	5/300
E04200	2" Tubular	3"	5/300

**T**