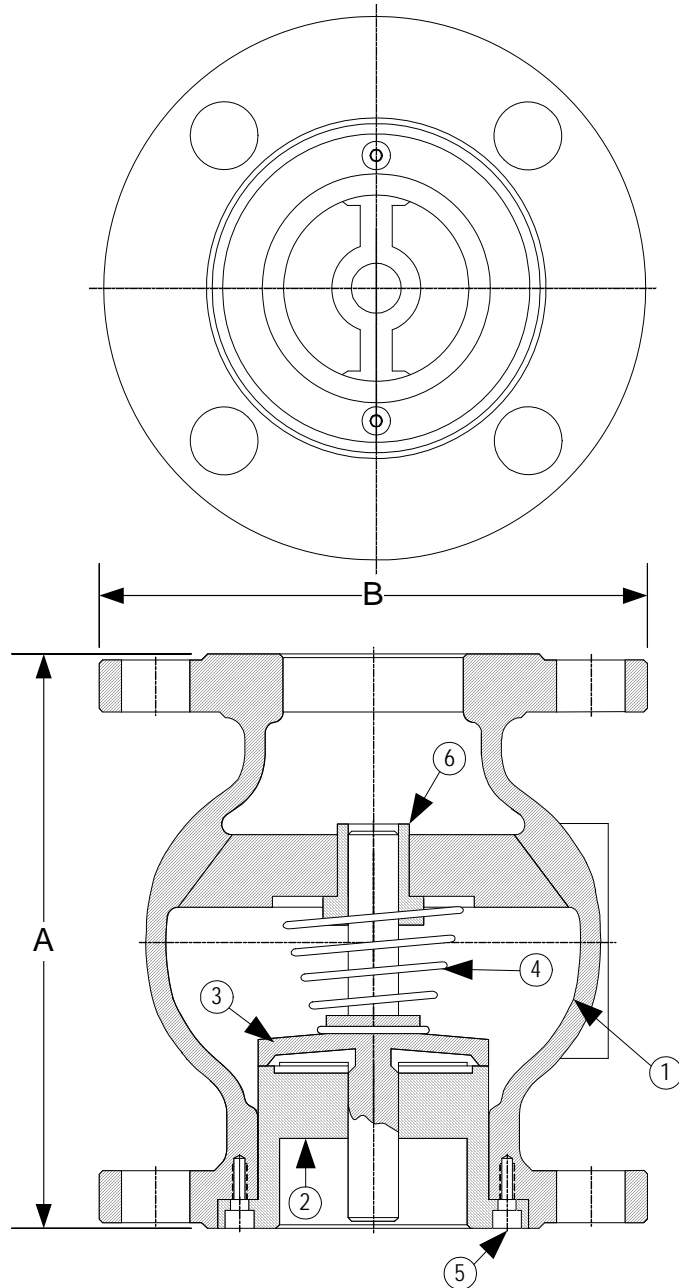


DRAWING NO.  
AL 99620

BODY PRESSURE & TEMPERATURE RATINGS – NON SHOCK			
NOM. RATING	MEDIA	2" to 12"	14" to 24"
250# (GLOBE)	W.O.G.	500 PSI @ 150°F	300 PSI @ 150°F



PARTS LIST		
ITEM	DESCRIPTION	MATERIAL
1	BODY	CAST IRON (ASTM A 126, CLASS B)
2	SEAT	CAST BRONZE (ASTM B 62, C83600)
3	DISC	CAST BRONZE (ASTM B 62, C83600)
4	SPRING	STAINLESS STEEL (ASTM A 182, GRADE F-304)
5	SCREW	STAINLESS STEEL (ASTM A 182, GRADE F-304)
6	BUSHING	STAINLESS STEEL (ASTM A 182, GRADE F-304)

PRODUCT NUMBER <sup>†</sup>	SIZE	DIMENSIONS			WEIGHT
		A	B	Bolt Hole Diameter	
2CG3R-CI-B2334	2	6-3/4	6-1/2	3/4	26
21/2CG3R-CI-B2334	2-1/2	7-5/8	7-1/2	7/8	30
3CG3R-CI-B2334	3	8-1/4	8-1/4	7/8	45
4CG3R-CI-B2334	4	9-1/8	10	7/8	75
5CG3R-CI-B2334	5	10-3/8	11	7/8	135
6CG3R-CI-B2334	6	11-3/8	12-1/2	7/8	146
8CG3R-CI-B2334	8	14	15	1	245
10CG3R-CI-B2334	10	17	17-1/2	1-1/8	370
12CG3R-CI-B2334	12	20-7/8	20-1/2	1-1/4	675
14CG3R-CI-B2334	14	23-3/8	23	1-1/4	770
16CG3R-CI-B2334	16	25-5/8	25-1/2	1-3/8	1005
18CG3R-CI-B2334	18	24-1/8	28	1-3/8	1240
20CG3R-CI-B2334	20	25-5/8	30-1/2	1-3/8	1780
24CG3R-CI-B2334	24	24-7/8	36	1-5/8	2550

<sup>†</sup>See "Style CG Product Number Configuration" for additional options.

APPLICABLE STANDARDS

• Design ASME B16.1	• MSS SP – 6
• Testing API 598	• MSS SP – 25

**KECKLEY**

3400 CLEVELAND SKOKIE ILLINOIS

DRAWING NO.  
AL 99620

DIMENSIONAL ASSEMBLY

PART NO.  
CG3R-CI-B2334

250# Globe Center Guided Silent

SCALE: NTS

Check Valve

DATE: 05/05/2014

MAT'L: Cast Iron

REQ. ---

DR. BY DSF