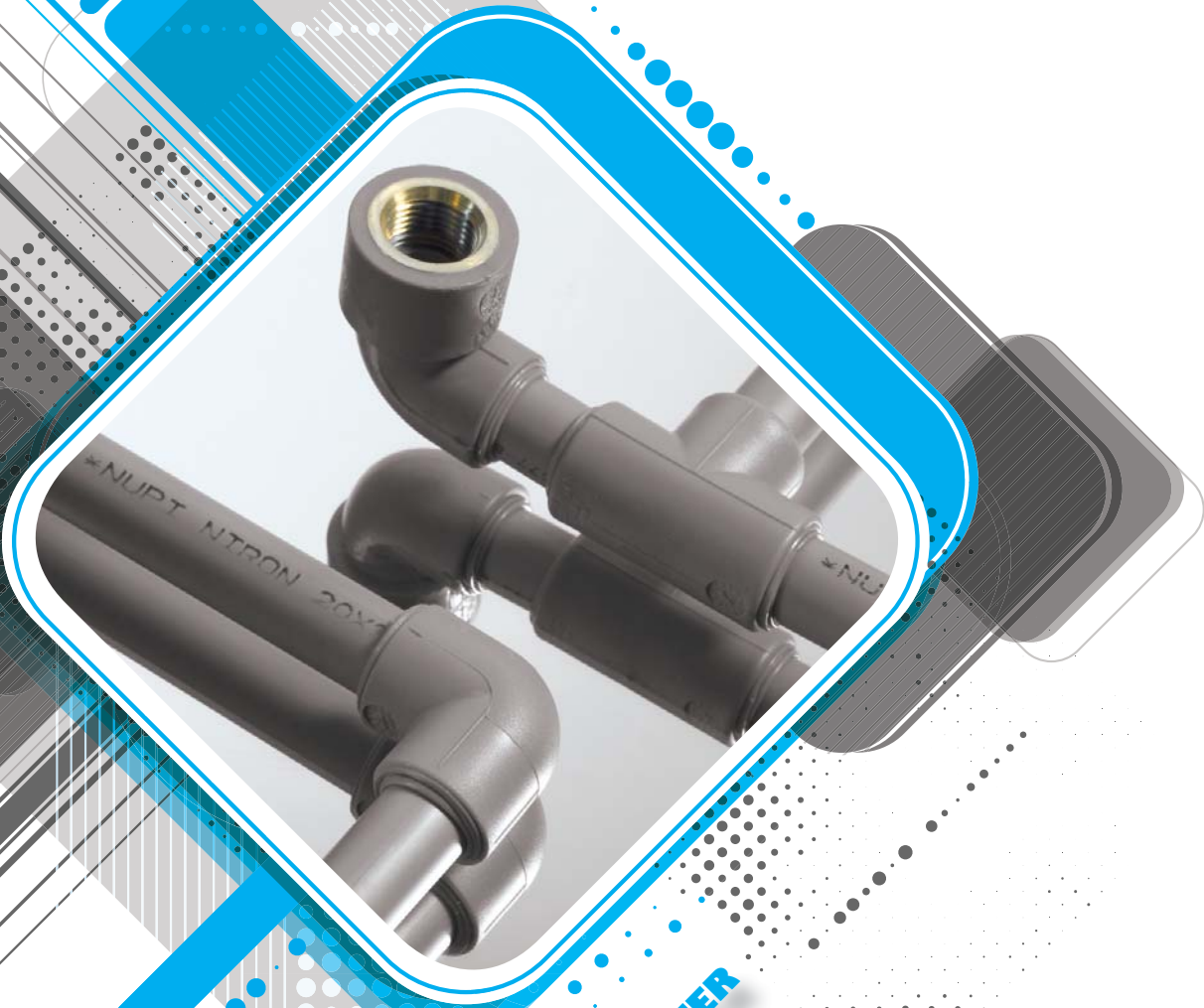


NIRON[®]

PP-RCT Piping Systems



APPROVED FOR POTABLE WATER



OUR COMPANY

NUPI INDUSTRIE ITALIANE S.p.A., the parent company of Nupi Americas, was founded over 40 years ago and today offers a complete range of pipes and fittings, produced using the most modern thermoplastic materials and manufacturing processes.

These systems solve many known problems of traditional materials, and can be installed in a wide range of installations while reducing costs, avoiding waste and increasing productivity.



***"The height
you attain
depends on
the depth of
your roots"***

systems, and continuous on-time deliveries for the success of every project.

The company employs several quality systems and is IQNET/CICISQ certified according to standards UNI EN ISO 9001 and UNI ISO 14001.

NUPI AMERICAS, Inc. was founded in 2001 in Houston, TX by NUPI INDUSTRIE ITALIANE S.p.A. as its North American subsidiary for production and sales of its Oiltech, Smartflex, Elofit, Elopess, Elamid and SmartConduit systems. Today, NUPI AMERICAS is proud to introduce our Niron Polypropylene piping systems.

Thanks to their quality, these products pass the requirements of a wide variety of national and international standards and have obtained numerous certifications and listings around the globe.

NUPI INDUSTRIE ITALIANE S.p.A. is continuously investing in research and development programs, while upgrading production systems with sophisticated technology that guarantees products of the highest quality.

Customers can rely on the best quality materials and precise manufacture, obtained through fully automated production



Since 2001 NUPI AMERICAS produced more 20 million feet of pipe, with over 4 million feet produced in 2013. With two extrusion lines currently operating, plans to increase production capacity and extensive warehouse space for maintaining a central inventory of fittings, NUPI AMERICAS is positioned to respond quickly to market needs for its unique piping systems. The production of multilayer and monolayer pipe combined with a complete range of electrofusion, heat fusion and mechanical fittings allows NUPI AMERICAS to provide cutting edge solutions to complex technological issues.

NUPI AMERICAS combines high productivity and constant high quality standards while being fully conscious of the environment. The synergy between research, production, quality control and post-sales service allowed the company to obtain many international quality certifications for various product ranges. Its market leadership is well maintained thanks to high quality products and the constant attention to customer's needs and requirements, and by means of an effective team of people in post-sales service, and effective and precise technical assistance and the training of installers.



THE PRODUCT

The NIRON brand identifies a Random Copolymer Polypropylene (PP-RCT) pipe and fitting system produced by Nupi Americas, manufactured to ASTM F2389 and CSA B137.11 standards.

NIRON is a piping system used for all kinds of water applications including hot and cold potable water applications, hydronic heating applications, and both chilled water and cooling tower circulation pipes. The system can be used for large multi-family residential buildings, hotels, hospitals, malls, churches, schools, gymnasiums, cruise liners and merchant ships. The NIRON system is also used in industrial installations for the conveyance of compressed air and several commonly used chemical substances.

■ ADVANCED PP-RCT MATERIAL

Niron is manufactured from 100% Beta PP-RCT material, a highly crystalline form of PPR which allows for up to twice the pressure rating at higher temperatures and superior chlorine resistance.

■ ABSOLUTE RELIABILITY

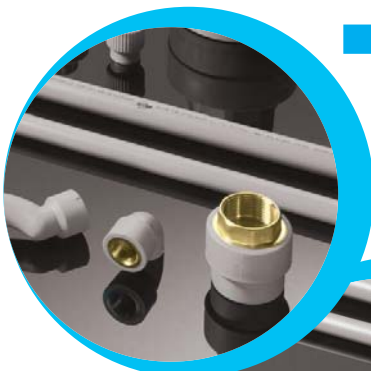
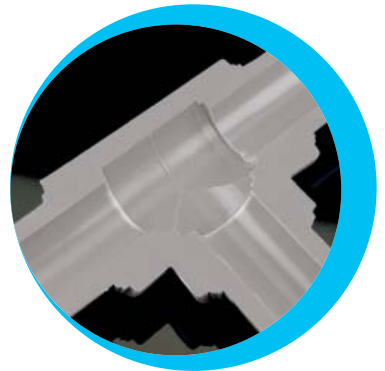
Produced since 1982, the NIRON system has been sold in all 5 continents. Over 150,000 miles of pipes and fittings have been shipped with complete customer and installer satisfaction.

■ CERTIFIED QUALITY

The NIRON system obtained the most prestigious international quality certificates but to us quality stands for complete customer satisfaction. This is obtained exclusively through the supply of products having features that completely fulfil the application requirements.

■ COMPLETE RANGE

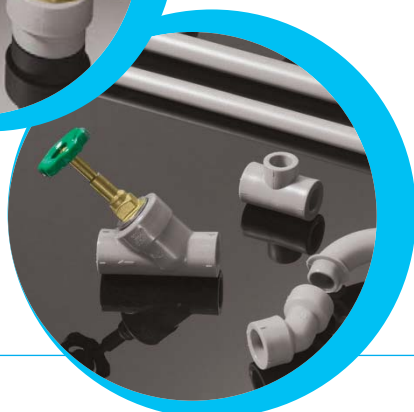
NIRON pipes and fittings - from 1/2 to 24 inches - are available in a wide range of fittings and joining methods to solve any installation problem.



■ LOW THERMAL EXPANSION

This is obtained thanks to the new composite piping NIRON FG and NIRON CLIMA produced with an innovative coextrusion technology.

Their inner layer is made of PP copolymer reinforced with fiberglass to reduce the linear thermal expansion up to 73%.



■ SPEED OF INSTALLATION

Unquestionably the biggest advantage of NIRON lies in the speed of installation.

Due to easy joining methods, time of installation can be reduced by 30 to 50%.

* NIRON, grey pigmented PP piping with red outer coating and longitudinal grey stripes, and grey pigmented PP piping with blue outer coating and longitudinal grey stripes are trademarks of Nupi Americas, a subsidiary of Nupigeco, S.p.A.

THE PRODUCT

■ NO CORROSION OR SCALING

Polypropylene is a poor conductor of electricity, so the NIRON system is cannot be affected by corrosion. Furthermore, thanks to its smooth inner surface, any type of lime incrustation is avoided.

■ ENERGY SAVING

The low thermal conductivity of polypropylene allows for considerable energy savings compared to metallic materials, and reduces insulation cost.

■ LOW NOISE INSTALLATION

The noise absorption properties and elasticity of this material soften noise and vibrations caused by the water flow and the water hammer effect.

■ RESISTANCE TO EXTREME TEMPERATURES AND THERMAL EXPANSION

The NIRON system is tested to resist temperatures up to boiling water and freezing conditions. NIRON FG piping allows thermal expansion to be reduced to levels similar to copper piping.

■ ABRASION RESISTANCE

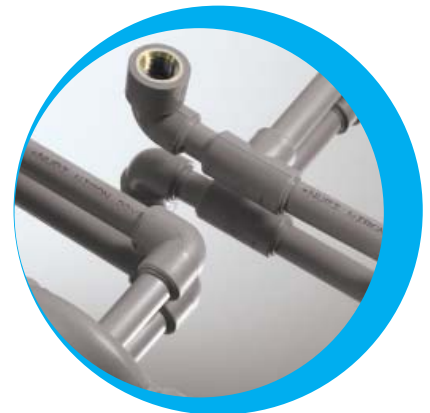
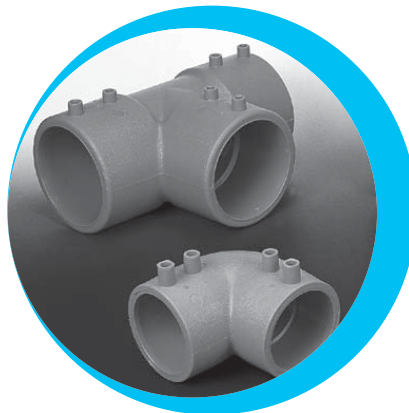
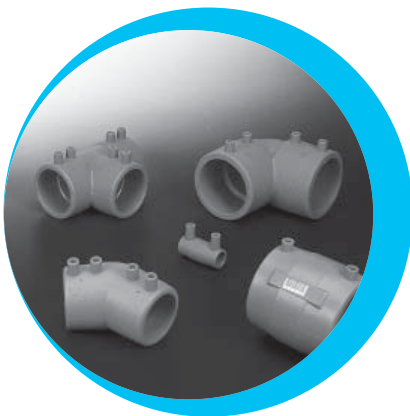
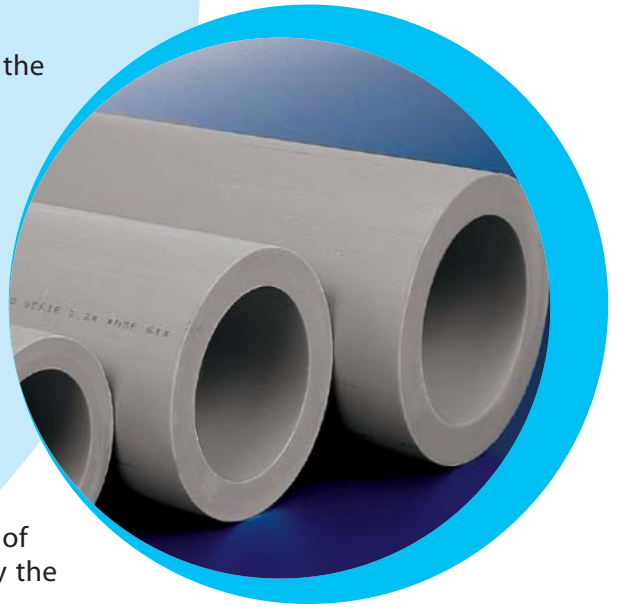
The high resistance of NIRON pipes eliminates erosion problems and allows high speed water flow.

■ NO TOXICITY

The NIRON system is absolutely non-toxic and complies with national and international health standards.

■ 30 YEAR WARRANTY

The NIRON system is covered by third party liability insurance in accordance to EC standards no. 85/374 and to D.P.R no. 244 dated 24th May 1988 - Italian law.



WIDE RANGE OF JOINING METHODS

Niron offers the widest range of joining options of any PPR product line with five primary joining methods and a complete range of fitting sizes. Niron can be joined by butt fusion and electrofusion thru 24 inch.

SOCKET FUSION

Niron offers socket fusion for full pressure joining with a full range of fittings in ½ inch through 5 inch sizes. Joints can be made using hand held tools, and in large sizes with bench-style tools for maximum effectiveness.



BUTT FUSION

Niron offers butt fusion with long spigot fittings starting at 2 inch and through 24 inch. Butt fusion is often a more fabrication friendly technique compared to socket fusion in sizes of 2 inch through 5 inch, and customers can take advantage of this feature of the Niron system.



ELECTROFUSION

Electrofusion offers a superior and cost effective ability to solve difficult installation challenges. Niron is the only PPR system available with a full fitting system allowing electrofusion in sizes of ½ through 8 inch. Niron's fittings are manufactured using single wire technology, which means welds are fused simultaneously for every elbow, tee and reducer for highly efficient labor rates. Niron electrofusion may be performed from 10" through 24" using Niron couplings.



COMPRESSION

Niron can be joined using a compression method, by the hand tightening of compression nuts of fittings and couplings. A full range of fittings are available in sizes of ½" through 4". The system is rated to 150 psi at ambient temperatures, and is rated to 90 psi for temperatures of up to 160°F in sizes through 2 inch and to 90 psi for temperature of up to 140°F in sizes of 2½" through 4 inch. Niron compression fittings and couplings may be disassembled and re-used, which adds versatility. Transition couplings are also available for connection to copper and copper-tube size systems.

SADDLE WELDING

Niron offers a full variety of saddle fusion fittings that allow small diameter branches to be made into larger pipes without the expense of adding reducing tees. Niron has saddles available which allow both socket fusion outlets, as well as, long spigot outlets (in select sizes). In addition, saddle parts are available with female threaded adapters, as well as, male transition parts to allow for a variety of PEX transitions. Custom headers can be created on site, or in the fabrication shop to prefabricate any kind of header combination that is required. Saddle welding offers substantial labor savings in comparison to installations involving copper piping.



PRODUCT RANGE

NIRON PIPING SYSTEM

NIRON BLUE PP-RCT PIPE



MONOLAYER PP-RCT PIPE
BLUE WITH GREY STRIPES
FOR COLD WATER
SDR 7.3 FROM 1/2" TO 3/4"
SDR 9 1"
SDR 11 FROM 1 1/4" TO 6"
SDR 17 FROM 2" TO 6"
PIPE LENGTH 20 FT

NIRON FG RED PP-RCT PIPE



MULTILAYER PIPE
PP-RCT + FIBERGLASS
RED WITH GREY STRIPES
FOR HOT WATER
SDR 7.3 FROM 1/2" TO 6"
SDR 9 FROM 1" TO 6"
SDR 11 FROM 1 1/4" TO 6"
PIPE LENGTH 20 FT

NIRON CLIMA PP-RCT PIPE



MULTILAYER CLIMA PIPE
PP-RCT + FIBERGLASS
GREY
SDR 7.3 FROM 1/2" TO 14"
SDR 9 1"
SDR 11 FROM 1 1/4" TO 16"
SDR 17 FROM 2" TO 24"
PIPE LENGTH 20 FT

NIRON MONO GREY PP-RCT PIPE



MONOLAYER PP-RCT PIPE
GREY
SDR 7.3 FROM 1/2" TO 3/4"
SDR 9 1"
SDR 11 FROM 1 1/4" TO 24"
SDR 17 FROM 2" TO 24"
PIPE LENGTH 20 FT

NIRON CLIMA 11 DARK



MULTILAYER CLIMA11 DARK
PIPE WITH UV RAY BARRIER
PP-RCT+FIBERGLASS+HDPE
COVER
GREY AND BLACK COVER
SDR 11 FROM 1" TO 16"
PIPE LENGTH 20 FT

FITTINGS

LONG RADIUS 90° ELBOW



CODE	inches
NCLR	1/2" - 3/4"

CROSSOVER PIPE



CODE	inches
NSOR	1/2" - 3/4" - 1"

90° ELBOW



CODE	inches
NG (SOCKET FUSION)	from 1/2" to 5"
NGMM (LONG SPIGOT)	from 2" to 20"

FEMALE THREADED 90° ELBOW



CODE	inches
NGF	from 1/2" x 1/2"NPT to 2" x 2" NPT

MALE THREADED 90° ELBOW



CODE	inches
NGM	from 1/2" x 1/2"NPT to 1" x 1" NPT

FEMALE THREADED BACK PLATE 90°



CODE	inches
NTER	1/2" x 1/2" NPT

FEMALE THREADED WINGED 90°



CODE	inches
NGTF	1/2" x 3/8" NPT 1/2" x 1/2" NPT

MALE THREADED WINGED 90°



CODE	inches
NGTM	1/2" x 3/8" NPT 1/2" x 1/2" NPT

MOUNTING UNIT WITH ELBOWS



CODE	inches
NGVRF	1/2" x 1/2" NPT

TEMPLATE FOR EXTERNAL BATH TAPS



CODE	inches
NGVF	1/2" x 1/2" NPT 3/4" x 1/2" NPT

FEMALE THREADED 90° ELBOW FOR TEMPLATE



CODE	inches
NGOF	1/2" x 3/8" NPT 3/4" x 1/2" NPT

MALE THREADED 90° ELBOW FOR TEMPLATE



CODE	inches
NGOM	1/2" x 1/2" NPT

STREET 90° ELBOW



CODE	inches
NGMF	from 1/2" to 1 1/4"

FEMALE THREADED STREET 90° ELBOW



CODE	inches
NGMFF	1/2" x 1/2" NPT

45° ELBOW



CODE	inches
NC45 (SOCKET FUSION)	from 1/2" to 5"
NC45MM (LONG SPIGOT)	from 2" to 20"

STREET 45° ELBOW



CODE	inches
NC45MF	from 1/2" to 1"

90° TEE



CODE	inches
NT (SOCKET FUSION)	from 1/2" to 5"
NTMM (LONG SPIGOT)	from 2" to 20"

FEMALE THREADED TEE W/NPT LEAD FREE BRASS



CODE	inches
NTF	from 1/2" x 1/2" NPT to 1" x 1" NPT

FEMALE THREADED TEE W/NPT STAINLESS STEEL



CODE	inches
NTFSS	from 1/2" x 1/2" NPT to 1" x 1" NPT

MALE THREADED TEE W/NPT LEAD FREE BRASS



CODE	inches
NTM	from 1/2" x 1/2" NPT to 1" x 1" NPT

MALE THREADED TEE W/NPT STAINLESS STEEL



CODE	inches
NTMSS	from 1/2" x 1/2" NPT to 1" x 1" NPT

REDUCING TEE



CODE	inches
NTR	from 3/4" x 1/2" to 5" x 4"

MALE SIDE FUSION REDUCED TEE



CODE	inches
NTRM	from 6" x 2" to 20" x 6" SDR11 - SDR17

FEMALE SIDE FUSION REDUCED TEE



CODE	inches
NTRF	from 3" x 1 1/4" to 14" x 4"

REDUCED CROSS



CODE	inches
NCR	from 1 1/4" x 1/2" x 1/2" x 1 1/4" to 1 1/4" x 3/4" x 3/4" x 1 1/4"

SLIDE ELBOW THREE OUTLETS



CODE	inches
NCTV	1/2"

REDUCING BUSHING



CODE	inches
NR	from 3/4" x 1/2" to 6" x 4"

MALE CONCENTRIC REDUCER



CODE	inches
SDR 11 - 17	
NR (LONG SPIGOT)	from 2 1/2" x 1 1/4" to 24" x 20"
NRCC (SHORT SPIGOT)	from 2 1/2" x 1 1/4" to 24" x 20"

COUPLING



CODE	inches
NMAN	from 1/2" to 5"

PRODUCT RANGE

FEMALE THREADED ADAPTER



CODE	inches
NRFF (W/LEAD FREE BRASS) NRFF/L (STANDARD BRASS)	from 1/2" x 1/2" NPT to 5" x 4"NPT

FEMALE THREADED ADAPTER



CODE	inches
NRFFSS (W/NPT STAINLESS STEEL)	from 1/2" x 1/2" NPT to 5" x 4"NPT

MALE THREADED ADAPTER



CODE	inches
NRFM (W/LEAD FREE BRASS) NRFM/L (STANDARD BRASS)	from 1/2" x 1/2" NPT to 5" x 4"NPT

MALE THREADED ADAPTER



CODE	inches
NRFMSS (W/NPT STAINLESS STEEL)	from 1/2" x 1/2" NPT to 5" x 4"NPT

ALL-PLASTIC UNIONS WITH SOCKET FUSION ENDS



CODE	inches
NBRF	from 1/2" to 2"

WELDING SADDLE W/SOCKET FUSION OUTLETS



CODE	inches
NGS	from 1 1/2" x 1/2" to 12" x 2"

MALE SIDE FUSION WELDING SADDLE



CODE	inches
NGSM	from 2" x 8" to 6" x 12"

FEMALE SIDE FUSION WELDING SADDLE



CODE	inches
NGSF (W/LEAD FREE BRASS) NGSF/L (STANDARD BRASS)	from 1 1/4" x 1/2" NPT to 4" x 1"NPT

FEMALE SIDE FUSION WELDING SADDLE



CODE	inches
NGSFSS (W/NPT STAINLESS TEEL)	from 1/2" to 14" NPT

END CAP



CODE	inches
NCC (SOCKET FUSION)	from 1/2" to 5"
NCCM (LONG SPIGOT)	
SDR 11 - 17	from 2" to 8"
NCCMS (SHORT SPIGOT)	
SDR 11 - 17	from 6" to 24"

STUB FLANGE



CODE	inches
NCOSA (SOCKET FUSION)	from 1" to 5"
NCRT (LONG SPIGOT)	
SDR 7.3-11-17	from 1" to 12"
NCRTS (SHORT SPIGOT)	
SDR 11-17	from 12" to 24"



PP BACKING RING ENCAPULED ASA 150



CODE	inches
FLAACPP	from 1" x 10"

GASKET LOW - STRESS EPDM



CODE	inches
GRET	from 1" x 18"

ELECTROFUSION FITTINGS

ELECTROFUSION COUPLING



CODE	inches
NME	from 1/2" x 24"

ELECTROFUSION REDUCER



CODE	inches
NRDE	from 1/2" x 3/4" to 8" x 6"

ELECTROFUSION 90° ELBOW



CODE	inches
NGEM	from 1/2" to 8"

ELECTROFUSION 45° ELBOW



CODE	inches
NCEM	from 1" to 8"

ELECTROFUSION TEE



CODE	inches
NTCE	from 1/2" to 8"

VALVES

COMPLETE STOP VALVE



CODE	inches
NRA	1/2" - 3/4"

ANGLE VALVE



CODE	inches
NRAIN	from 1/2" to 1"

EXTENDED STOP VALVE



CODE	inches
NRAPRO	1/2" - 3/4"

CONCEALED (EXTRACTABLE) BALL VALVE



CODE	inches
NRS	from 1/2" to 1"

PPR TRUE UNION BALL VALVE



CODE	inches
NRSPPVKD	from 1/2" to 4"

PP-RCT COMPRESSION FITTING

COUPLING



CODE	inches
NKMAN	from 1/2" to 4"

90° ELBOW



CODE	inches
NKG	from 1/2" to 4"

REDUCER



CODE	inches
NKR	from 3/4"x1/2" to 4"x3"

90° TEE



CODE	inches
NKT	from 1/2" to 4"

EQUIPMENT

PIPE CUTTERS



CODE	inches
SHEAR	from 1/2" to 1"
CIRCULAR	from 1/2" to 1 1/4"
GUILLOTINE	max 4"
CIRCULAR	from 1/2" to 4"

SCRAPERS



CODE	inches
MANUAL	
TURBO	from 2 1/2" to 16"
ORBITAL	

ALIGNER



CODE	inches
FOR E/F FITTINGS	from 2" to 10"

SOCKET FUSION TOOLS



CODE	inches
HAND HELD SOCKET FUSION TOOL WITH BUSHINGS AND CASE	from 1/2" to 1"
SOCKET FUSION TOOL WITH SUPPORT	from 1/2" to 4"
BENCHTOP SOCKET FUSION TOOL SUPPORT WITH BUSHINGS AND CASE	from 1/2" to 4"



BUTT WELDING MACHINE



CODE	inches
COMPLETE MANUAL BUTT WELDING MACHINE WITH CASE	from 1/4" to 10"

AUTOMATIC WELDING UNIT FOR E/F FITTINGS



CODE	inches
LIGHT VERSION	from 1/2" to 6"
W/BLUETOOTH	from 1/2" to 24"



Nupi Americas, Inc.

1511 Superior Way,
Houston - TX 77039 - U.S.A.
ph. 281 590 4471
fax 281 590 5268
info@nupiamericas.com
www.nupiamericas.com