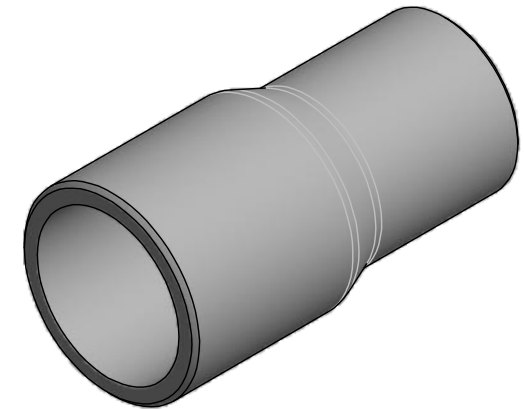
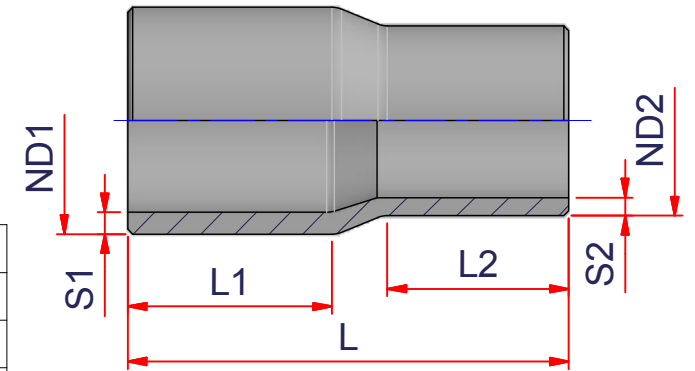



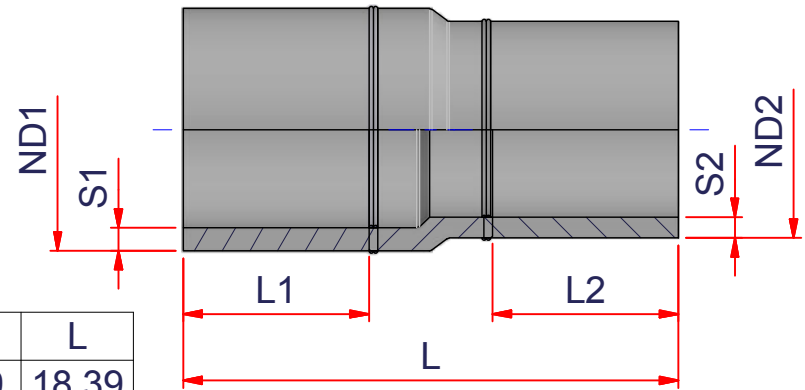


CODE	ND1	S1	ND2	S2	L1	L2	L
27NR634011MM	2" => 63 mm	0.23	1" 1/4 => 40 mm	0.15	2.56	2.05	5.20
27NR635011MM	2" => 63 mm	0.23	1" 1/2 => 50 mm	0.18	2.56	2.20	5.20
27NR754011MM	2" 1/2 => 75 mm	0.27	1" 1/4 => 40 mm	0.15	2.56	1.89	5.63
27NR755011MM	2" 1/2 => 75 mm	0.27	1" 1/2 => 50 mm	0.18	2.56	1.89	5.55
27NR756311MM	2" 1/2 => 75 mm	0.27	2" => 63 mm	0.23	2.80	2.52	5.90
27NR905011MM	3" => 90 mm	0.32	1" 1/2 => 50 mm	0.18	2.87	2.24	5.98
27NR906311MM	3" => 90 mm	0.32	2" => 63 mm	0.23	2.80	2.24	5.90
27NR907511MM	3" => 90 mm	0.32	2" 1/2 => 75 mm	0.27	3.19	2.84	6.89
27NR1106311MM	4" => 110 mm	0.39	2" => 63 mm	0.23	3.35	2.76	6.89
27NR1107511MM	4" => 110 mm	0.39	2" 1/2 => 75 mm	0.27	3.47	2.28	7.28
27NR1109011MM	4" => 110 mm	0.39	3" => 90 mm	0.32	3.07	2.76	6.89
27NR1257511MM	5" => 125 mm	0.45	2" 1/2 => 75 mm	0.27	3.62	2.36	7.84
27NR1259011MM	5" => 125 mm	0.45	3" => 90 mm	0.32	3.39	2.76	7.32
27NR12511011MM	5" => 125 mm	0.45	4" => 110 mm	0.39	3.50	3.03	7.36
27NR1609011MM	6" => 160 mm	0.57	3" => 90 mm	0.32	4.21	3.54	9.05
27NR16011011MM	6" => 160 mm	0.57	4" => 110 mm	0.39	4.06	3.46	8.46
27NR16012511MM	6" => 160 mm	0.57	5" => 125 mm	0.45	4.02	3.58	8.43
27NR20016011MM	8" => 200 mm	0.72	6" => 160 mm	0.58	4.65	3.98	9.45

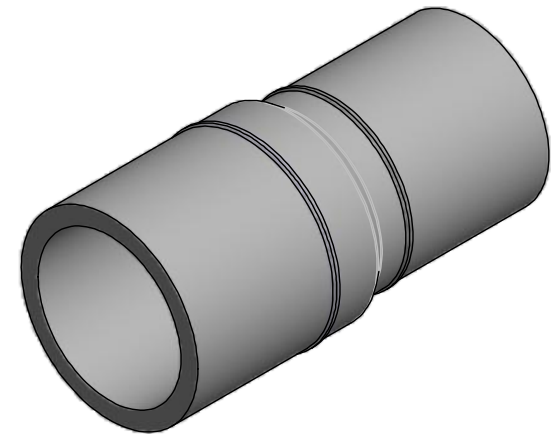


  <a href="http://www.nupiamericas.com">www.nupiamericas.com</a> - <a href="mailto:info@nupiamericas.com">info@nupiamericas.com</a>	<b>ITEM:</b> NR_11MM	<b>DESC:</b> MALE CONCENTRIC REDUCER - LONG SPIGOT SDR 11		<b>DRAWING No:</b> NI10143	
	<small>C:\Vault_Temp\Disegn\ISchede Tecniche\Niron Grey inches\Butt Fusion Fittings\NI10143.dwg</small>	<b>SHEET OF</b> 1 2		<b>REV.</b> -4	

All dimensions have to be considered in inches with 5% tolerance if not otherwise mentioned excluding values as per standard ASTM F2389



CODE	ND1	S1	ND2	S2	L1	L2	L
27NR25016011MMB	10"=>250 mm	0.89	6"=>160 mm	0.58	8.35	6.89	18.39
27NR25020011MMB	10"=>250 mm	0.89	8"=>200 mm	0.72	8.35	7.28	18.78
27NR31516011MMB	12"= 315 mm	1.13	6"=>160 mm	0.58	12.59	6.89	22.63
27NR31520011MMB	12"=>315 mm	1.13	8"=>200 mm	0.72	12.59	7.28	23.02
27NR31525011MMB	12"=>315 mm	1.13	10"=>250 mm	0.89	12.59	8.35	24.09
27NR35520011MMB	14"=>355 mm	1.27	8"=>200 mm	0.72	12.59	7.28	23.02
27NR35525011MMB	14"=>355 mm	1.27	10"=>250 mm	0.89	12.59	8.35	24.09
27NR35531511MMB	14"=>355 mm	1.27	12"=>315 mm	1.13	12.59	12.59	29.12
27NR40025011MMB	16"=>400 mm	1.43	10"=>250 mm	0.89	12.59	8.35	24.88
27NR40031511MMB	16"=>400 mm	1.43	12"=>315 mm	1.13	12.59	12.59	29.12
27NR40035511MMB	16"=>400 mm	1.43	14"=>355 mm	1.27	12.59	12.59	29.12
27NR45031511MMB	18"=>450 mm	1.61	12"=>315 mm	1.13	13.39	12.59	29.92
27NR45035511MMB	18"=>450 mm	1.61	14"=>355 mm	1.27	13.39	12.59	29.92
27NR45040011MMB	18"=>450 mm	1.61	16"=>400 mm	1.43	13.39	12.59	29.92
27NR50035511MMB	20"=>500 mm	1.79	14"=>355 mm	1.27	14.96	12.59	31.49
27NR50040011MMB	20"=>500 mm	1.79	16"=>400 mm	1.43	14.96	12.59	31.49
27NR50045011MMB	20"=>500 mm	1.79	18"=>450 mm	1.61	14.96	13.39	32.29



ITEM: NR\_11MMB

C:\Vault\_Temp\Disegn\ISchede Tecniche\Niron Grey inches\Butt Fusion Fittings\NI10143.dwg

DESC: MALE CONCENTRIC REDUCER - LONG SPIGOT SDR11



DRAWING No:  
NI10143

SHEET OF	REV.
2 2	-4

www.nupiamericas.com - info@nupiamericas.com

All dimensions have to be considered in inches with 5% tolerance if not otherwise mentioned excluding values as per standard ASTM F2389