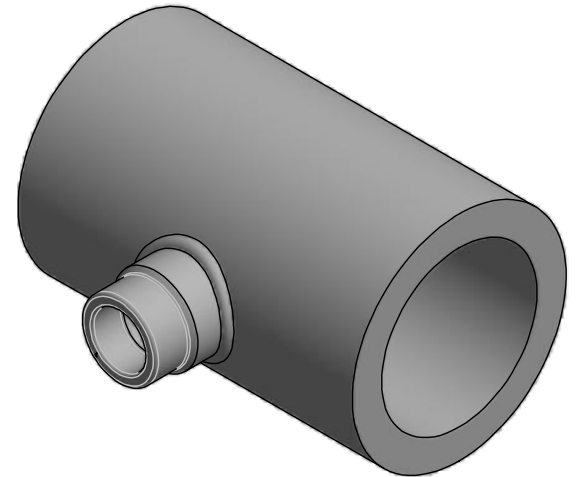
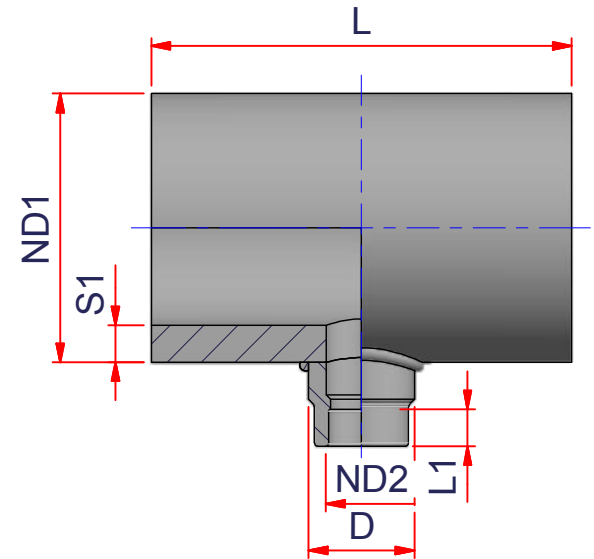


CODE	ND1	ND2	S1	D	L1	L
27NTR119040F90	3" => 90 mm	1" 1/4 => 40 mm	0.32	2.48	0.87	8.98
27NTR119050F90	3" => 90 mm	1" 1/2 => 50 mm	0.32	2.76	0.98	9.26
27NTR119063F90	3" => 90 mm	2" => 63 mm	0.32	3.54	1.14	10.04
27NTR1111040F110	4" => 110 mm	1" 1/4 => 40 mm	0.39	2.48	0.87	9.17
27NTR1111050F110	4" => 110 mm	1" 1/2 => 50 mm	0.39	2.76	0.98	9.45
27NTR1111063F110	4" => 110 mm	2" => 63 mm	0.39	3.54	1.14	10.23
27NTR1112540F125	5" => 125 mm	1" 1/4 => 40 mm	0.45	2.48	0.87	9.76
27NTR1112550F125	5" => 125 mm	1" 1/2 => 50 mm	0.45	2.76	0.98	10.04
27NTR1112563F125	5" => 125 mm	2" => 63 mm	0.45	3.54	1.14	10.82
27NTR1112575F125	5" => 125 mm	2" 1/2 => 75 mm	0.45	4.33	1.30	11.61
27NTR1112590F125	5" => 125 mm	3" => 90 mm	0.45	4.88	1.46	12.16
27NTR1116050F160	6" => 160 mm	1 1/2" => 50 mm	0.58	2.76	0.98	10.24
27NTR1116063F160	6" => 160 mm	2" => 63 mm	0.58	3.54	1.14	11.02
27NTR1116075F160	6" => 160 mm	2 1/2" => 75 mm	0.58	4.33	1.30	11.81
27NTR1116090F160	6" => 160 mm	3" => 90 mm	0.58	4.88	1.46	12.36
27NTR1120040F200	8" => 200 mm	1 1/4" => 40 mm	0.72	2.48	0.87	10.35
27NTR1120050F200	8" => 200 mm	1 1/2" => 50 mm	0.72	2.76	0.98	10.63
27NTR1120063F200	8" => 200 mm	2" => 63 mm	0.72	3.54	1.14	11.41
27NTR1120075F200	8" => 200 mm	2 1/2" => 75 mm	0.72	4.33	1.30	12.2
27NTR1120090F200	8" => 200 mm	3" => 90 mm	0.72	4.88	1.46	12.75
27NTR1125040F250	10" => 250 mm	1 1/4" => 40 mm	0.89	2.48	0.87	11.73
27NTR1125050F250	10" => 250 mm	1 1/2" => 50 mm	0.89	2.76	0.98	12.01
27NTR1125063F250	10" => 250 mm	2" => 63 mm	0.89	3.54	1.14	12.79
27NTR1125075F250	10" => 250 mm	2 1/2" => 75 mm	0.89	4.33	1.30	13.58
27NTR1125090F250	10" => 250 mm	3" => 90 mm	0.89	4.88	1.46	14.13



NIRON



ITEM: **NTR11_F**

DESC: FEMALE SIDE FUSION REDUCED TEE
SDR 11

C:\Vault_Templ\Disegn\ISchede Tecniche\Niron Grey inches\Butt Fusion Fittings\N110224.dwg

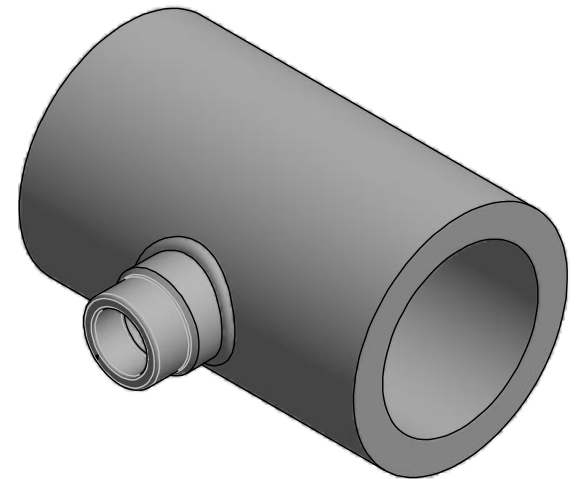
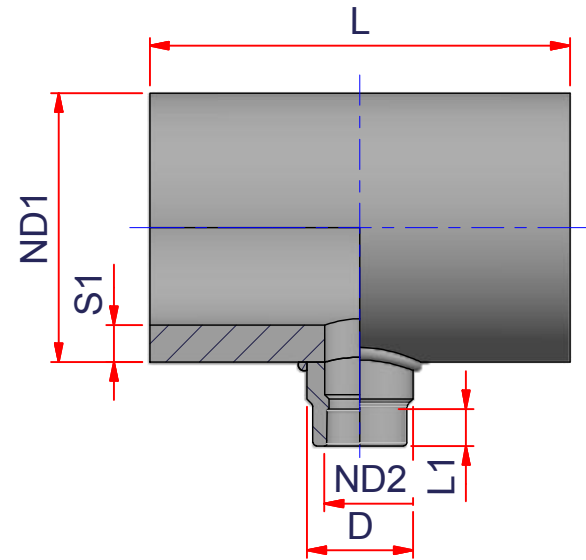


DRAWING No:
NI10224

SHEET OF	REV.
1 2	0

www.nupiamericas.com - info@nupiamericas.com

All dimensions have to be considered in inches with 5% tolerance if not otherwise mentioned excluding values as per standard ASTM F2389



CODE	ND1	ND2	S1	D	L1	L
27NTR1131540F315	12" => 315 mm	1" 1/4 => 40 mm	1.13	2.48	0.87	12.52
27NTR1131550F315	12" => 315 mm	1" 1/2 => 50 mm	1.13	2.76	0.98	12.80
27NTR1131563F315	12" => 315 mm	2" => 63 mm	1.13	3.54	1.14	13.58
27NTR1131575F315	12" => 315 mm	2" 1/2 => 75 mm	1.13	4.33	1.30	14.37
27NTR1131590F315	12" => 315 mm	3" => 90 mm	1.13	4.88	1.46	14.92
27NTR1135540F355	14" => 355 mm	1" 1/4 => 40 mm	1.27	2.48	0.87	13.31
27NTR1135550F355	14" => 355 mm	1" 1/2 => 50 mm	1.27	2.76	0.98	13.59
27NTR1135563F355	14" => 355 mm	2" => 63 mm	1.27	3.54	1.14	14.37
27NTR1135575F355	14" => 355 mm	2" 1/2 => 75 mm	1.27	4.33	1.30	15.16
27NTR1135590F355	14" => 355 mm	3" => 90 mm	1.27	4.88	1.46	15.71



ITEM: NTR11_F

C:\Vault_Templ\Disegn\ISchede Tecniche\Niron Grey inches\Butt Fusion Fittings\NI10224.dwg

DESC: FEMALE SIDE FUSION REDUCED TEE
SDR 11



DRAWING No:
NI10224

SHEET OF	REV.
2 2	0

www.nupiamericas.com - info@nupiamericas.com

All dimensions have to be considered in inches with 5% tolerance if not otherwise mentioned excluding values as per standard ASTM F2389