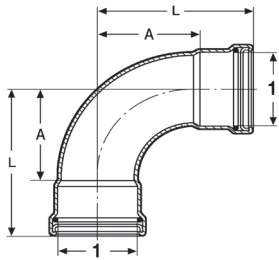


Dimensional Documentation

viega

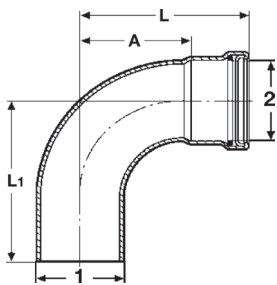


ProPress® XL (Copper)



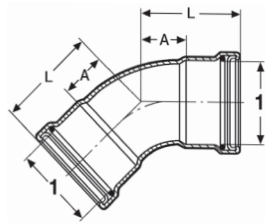
Viega ProPress XL 90° Elbow Copper P x P - Model 0916XL

| Stock Code | Size | A (in) | L (in) |
|------------|------|--------|--------|
| | 1 | | |
| 20623 | 2½" | 3.19 | 4.88 |
| 20628 | 3" | 3.76 | 5.73 |
| 20633 | 4" | 4.90 | 7.26 |



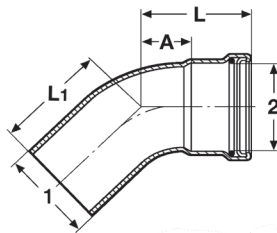
Viega ProPress XL 90° Street Elbow Copper P x FTG - Model 0916.1XL

| Stock Code | Size | A (in) | L (in) | L1 (in) |
|------------|-----------|--------|--------|---------|
| | 1 2 | | | |
| 20638 | 2½" x 2½" | 3.19 | 4.88 | 4.80 |
| 20643 | 3" x 3" | 3.76 | 5.73 | 5.63 |
| 20648 | 4" x 4" | 4.90 | 7.26 | 7.13 |



Viega ProPress XL 45° Copper P x P - Model 0926XL

| Stock Code | Size | A (in) | L (in) |
|------------|------|--------|--------|
| | 1 | | |
| 20653 | 2½" | 1.48 | 3.18 |
| 20658 | 3" | 1.73 | 3.70 |
| 20663 | 4" | 1.96 | 4.63 |

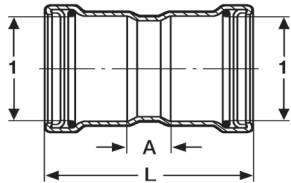


Viega ProPress XL 45° Street Elbow Copper P x FTG - Model 0926.1XL

| Stock Code | Size | A (in) | L (in) | L1 (in) |
|------------|-----------|--------|--------|---------|
| | 1 2 | | | |
| 20668 | 2½" x 2½" | 1.48 | 3.18 | 3.10 |
| 20673 | 3" x 3" | 1.73 | 3.70 | 3.60 |
| 20678 | 4" x 4" | 2.20 | 4.57 | 4.49 |

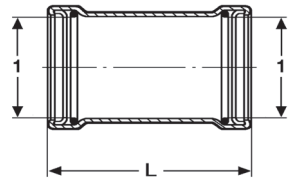
Dimensional Documentation

viega



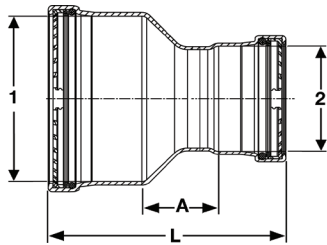
Viega ProPress XL Coupling with Stop Copper P x P - Model 0915XL

| Stock Code | Size | A (in) | L (in) |
|------------|----------|--------|--------|
| | 1 | | |
| 20728 | 2½" | 0.95 | 4.33 |
| 20733 | 3" | 0.98 | 4.92 |
| 20738 | 4" | 1.06 | 5.79 |



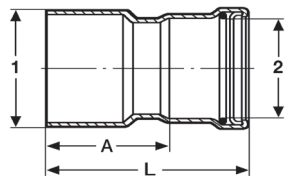
Viega ProPress XL Coupling No Stop Copper P x P - Model 0915.5XL

| Stock Code | Size | L (in) |
|------------|----------|--------|
| | 1 | |
| 20743 | 2½" | 4.33 |
| 20748 | 3" | 4.92 |
| 20753 | 4" | 5.79 |



Viega ProPress XL Reducer Copper P x P - Model 0915.2XL

| Stock Code | Size | A (in) | L (in) |
|------------|------------|--------|--------|
| | 1 2 | | |
| 20685 | 2½" x 1" | 1.76 | 4.36 |
| 20690 | 2½" x 1¼" | 1.61 | 4.34 |
| 20695 | 2½" x 1½" | 1.52 | 4.64 |
| 20700 | 2½" x 2" | 1.41 | 4.69 |
| 20705 | 3" x 1½" | 1.78 | 5.17 |
| 20710 | 3" x 2" | 1.53 | 5.08 |
| 20715 | 3" x 2½" | 1.41 | 5.07 |
| 20720 | 4" x 2" | 2.06 | 6.00 |
| 20725 | 4" x 2½" | 1.93 | 5.99 |
| 20730 | 4" x 3" | 1.70 | 6.03 |

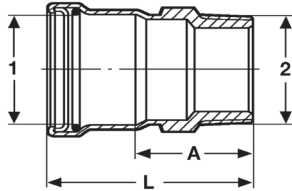


Viega ProPress XL Reducer Copper FTG x P - Model 0915.1XL

| Stock Code | Size | A (in) | L (in) |
|------------|------------|--------|--------|
| | 1 2 | | |
| 20814 | 2½" x 1" | 3.61 | 4.52 |
| 20815 | 2½" x 1¼" | 3.47 | 4.51 |
| 20813 | 2½" x 1½" | 3.41 | 4.84 |
| 20758 | 2½" x 2" | 2.35 | 3.94 |
| 20817 | 3" x 1¼" | 3.96 | 5.00 |
| 20818 | 3" x 1½" | 3.91 | 5.34 |
| 20763 | 3" x 2" | 2.98 | 4.57 |
| 20768 | 3" x 2½" | 2.56 | 4.25 |
| 20773 | 4" x 2" | 4.58 | 6.17 |
| 20778 | 4" x 2½" | 4.45 | 6.15 |
| 20783 | 4" x 3" | 4.17 | 6.14 |

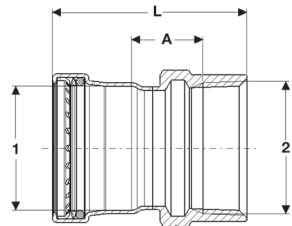
Dimensional Documentation

viega



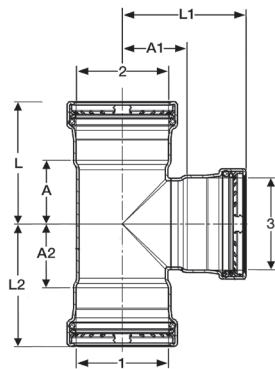
Viega ProPress XL Adapter Copper P x MPT - Model 0911XL

| Stock Code | Size | A (in) | L (in) |
|------------|---------------|--------|--------|
| | 1 2 | | |
| 20823 | 2½" x 2½" MPT | 2.76 | 4.45 |
| 20828 | 3" x 3" MPT | 2.84 | 4.80 |
| 20838 | 4" x 4" MPT | 3.10 | 5.46 |



Viega ProPress XL Adapter Copper P x FPT - Model 0912XL

| Stock Code | Size | A (in) | L (in) |
|------------|---------------|--------|--------|
| | 1 2 | | |
| 20819 | 2½" x 2½" FPT | 1.53 | 4.15 |
| 20829 | 3" x 3" FPT | 1.84 | 4.82 |
| 20839 | 4" x 4" FPT | 2.09 | 5.55 |



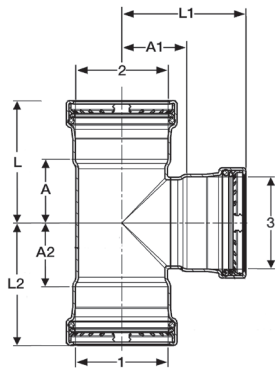
Viega ProPress XL Tee Copper P x P x P - Model 0918XL

| Stock Code | Size | A (in) | A1 (in) | A2 (in) | L (in) | L1 (in) | L2 (in) |
|------------|-----------------|--------|---------|---------|--------|---------|---------|
| | 1 2 3 | | | | | | |
| 20684 | 2½" x ¾" x 2½" | 1.83 | 1.87 | 3.23 | 3.52 | 3.56 | 4.13 |
| 20689 | 2½" x 1" x 2½" | 1.83 | 1.91 | 3.25 | 3.52 | 3.60 | 4.15 |
| 20694 | 2½" x 1¼" x 2½" | 1.83 | 1.87 | 3.20 | 3.52 | 3.56 | 4.23 |
| 20699 | 2½" x 1½" x 2½" | 1.83 | 1.91 | 3.14 | 3.52 | 3.60 | 4.57 |
| 20704 | 2½" x 2" x ¾" | 1.04 | 1.61 | 1.59 | 2.74 | 2.52 | 3.17 |
| 20709 | 2½" x 2" x 1" | 1.04 | 1.77 | 1.65 | 2.74 | 2.67 | 3.24 |
| 22283 | 2½" x 2" x 1½" | 1.30 | 1.78 | 1.92 | 2.99 | 3.21 | 3.50 |
| 22278 | 2½" x 2" x 2" | 1.50 | 1.75 | 2.25 | 3.19 | 3.33 | 3.83 |
| 20714 | 2½" x 2" x 2½" | 1.83 | 1.91 | 2.41 | 3.52 | 3.60 | 4.00 |
| 22303 | 2½" x 2½" x ½" | 0.91 | 1.52 | 0.91 | 2.60 | 2.27 | 2.60 |
| 22298 | 2½" x 2½" x ¾" | 0.91 | 1.58 | 0.91 | 2.60 | 2.48 | 2.60 |
| 22293 | 2½" x 2½" x 1" | 1.04 | 1.77 | 1.04 | 2.74 | 2.68 | 2.74 |
| 22288 | 2½" x 2½" x 1¼" | 1.16 | 1.76 | 1.16 | 2.85 | 2.79 | 2.85 |
| 20803 | 2½" x 2½" x 1½" | 1.30 | 1.78 | 1.30 | 2.99 | 3.21 | 2.99 |
| 20688 | 2½" x 2½" x 2" | 1.54 | 1.75 | 1.54 | 3.23 | 3.34 | 3.23 |
| 20683 | 2½" x 2½" x 2½" | 1.83 | 1.87 | 1.83 | 3.52 | 3.57 | 3.52 |
| 20719 | 3" x ¾" x 3" | 2.07 | 2.15 | 3.82 | 4.04 | 4.11 | 4.72 |
| 20724 | 3" x 1" x 3" | 2.07 | 2.18 | 3.96 | 4.04 | 4.15 | 4.86 |
| 20729 | 3" x 1¼" x 3" | 2.07 | 2.18 | 3.83 | 3.96 | 4.15 | 4.86 |

Continued on next page

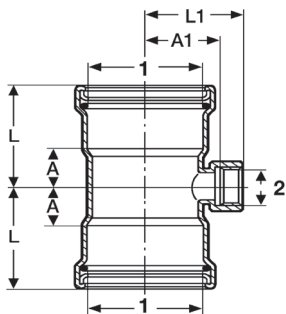
Dimensional Documentation

viega



Viega ProPress XL Tee Copper P x P x P - Model 0918XL (continued from previous page)

| Stock Code | Size | A (in) | A1 (in) | A2 (in) | L (in) | L1 (in) | L2 (in) |
|------------|----------------|--------|---------|---------|--------|---------|---------|
| | 1 2 3 | | | | | | |
| 20727 | 3" x 1½" x 3" | 2.07 | 2.15 | 3.71 | 4.04 | 4.11 | 5.14 |
| 20732 | 3" x 2" x 2" | 1.56 | 2.00 | 2.34 | 3.52 | 3.59 | 3.92 |
| 20734 | 3" x 2" x 2½" | 1.85 | 2.15 | 2.63 | 3.82 | 3.85 | 4.21 |
| 20739 | 3" x 2" x 3" | 2.07 | 2.15 | 2.85 | 4.04 | 4.11 | 4.43 |
| 20744 | 3" x 2½" x 2" | 1.56 | 2.03 | 2.07 | 3.52 | 3.61 | 3.76 |
| 20749 | 3" x 2½" x 2½" | 1.85 | 2.15 | 2.36 | 3.82 | 3.85 | 4.06 |
| 20754 | 3" x 2½" x 3" | 2.07 | 2.15 | 2.58 | 4.04 | 4.11 | 4.27 |
| 20759 | 3" x 3" x ½" | 0.93 | 1.76 | 0.93 | 2.89 | 2.50 | 2.89 |
| 22323 | 3" x 3" x ¾" | 0.93 | 1.80 | 0.93 | 2.89 | 2.71 | 2.89 |
| 22308 | 3" x 3" x 1" | 1.06 | 2.02 | 1.06 | 3.03 | 2.92 | 3.03 |
| 22313 | 3" x 3" x 1¼" | 1.18 | 2.01 | 1.18 | 3.15 | 3.04 | 3.15 |
| 20798 | 3" x 3" x 1½" | 1.32 | 2.03 | 1.32 | 3.29 | 5.02 | 3.29 |
| 20698 | 3" x 3" x 2" | 1.56 | 2.00 | 1.56 | 3.52 | 3.59 | 3.52 |
| 20703 | 3" x 3" x 2½" | 1.85 | 2.15 | 1.85 | 3.82 | 3.85 | 3.82 |
| 20693 | 3" x 3" x 3" | 2.07 | 2.21 | 2.07 | 4.04 | 4.18 | 4.04 |
| 20774 | 4" x 3" x 2" | 1.59 | 2.57 | 3.33 | 3.96 | 4.15 | 5.30 |
| 20784 | 4" x 3" x 3" | 2.11 | 2.66 | 3.84 | 4.47 | 4.63 | 5.81 |
| 20788 | 4" x 4" x ½" | 1.08 | 2.24 | 1.08 | 3.45 | 2.99 | 3.45 |
| 20793 | 4" x 4" x ¾" | 1.08 | 2.32 | 1.08 | 3.45 | 3.22 | 3.45 |
| 20794 | 4" x 4" x 1" | 1.36 | 2.52 | 1.36 | 3.72 | 3.42 | 3.72 |
| 20795 | 4" x 4" x 1¼" | 1.36 | 2.50 | 1.36 | 3.72 | 3.54 | 3.72 |
| 20808 | 4" x 4" x 1½" | 1.36 | 2.52 | 1.36 | 3.72 | 3.95 | 3.72 |
| 20713 | 4" x 4" x 2" | 1.59 | 2.53 | 1.59 | 3.96 | 4.11 | 3.96 |
| 20718 | 4" x 4" x 2½" | 1.89 | 2.65 | 1.89 | 4.25 | 4.35 | 4.25 |
| 20723 | 4" x 4" x 3" | 2.11 | 2.69 | 2.11 | 4.47 | 4.65 | 4.47 |
| 20708 | 4" x 4" x 4" | 2.60 | 2.72 | 2.60 | 4.96 | 5.09 | 4.96 |

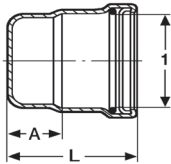


Viega ProPress XL Tee Copper P x P x FPT - Model 0917.2XL

| Stock Code | Size | A (in) | A1 (in) | L (in) | L1 (in) |
|------------|--------------|--------|---------|--------|---------|
| | 1 2 | | | | |
| 20883 | 2½" x ¾" FPT | 1.02 | 1.78 | 2.72 | 2.34 |
| 20878 | 2½" x 2" FPT | 1.54 | 1.90 | 3.23 | 2.60 |
| 20893 | 3" x ¾" FPT | 1.04 | 2.03 | 3.01 | 2.59 |
| 20888 | 3" x 2" FPT | 1.56 | 2.16 | 3.52 | 2.85 |
| 20873 | 4" x ¾" FPT | 1.08 | 2.53 | 3.34 | 3.09 |
| 20868 | 4" x 2" FPT | 1.59 | 2.69 | 3.96 | 3.38 |

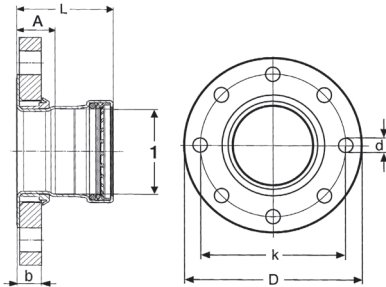
Dimensional Documentation

viega



Viega ProPress XL Cap Copper P - Model 0956XL

| Stock Code | Size | A (in) | L (in) |
|------------|------|--------|--------|
| | 1 | | |
| 20833 | 2½" | 0.39 | 2.11 |
| 20843 | 3" | 0.39 | 2.36 |
| 20848 | 4" | 0.39 | 2.76 |

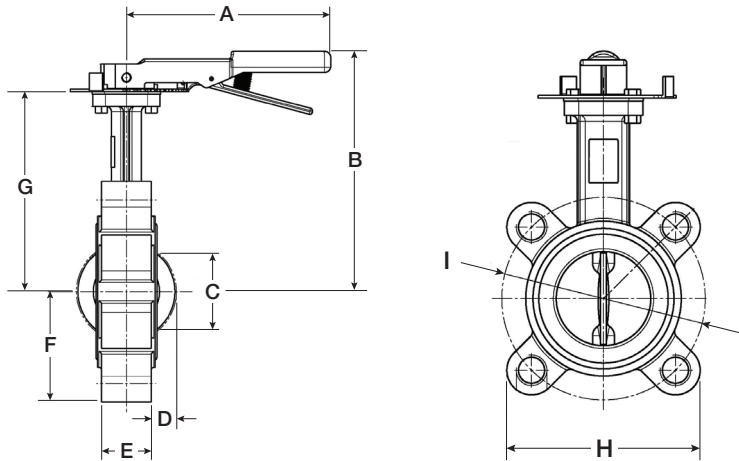


Viega ProPress XL Adapter Flange Copper P x Flange - Model 0959.5XL

| Stock Code | Size | A (in) | L (in) | b (in) | k (in) | D (in) | d (in) |
|------------|------|--------|--------|--------|--------|--------|--------|
| | 1 | | | | | | |
| 20853 | 2½" | 1.09 | 2.79 | 0.70 | 5.51 | 7.09 | 0.75 |
| 20858 | 3" | 1.20 | 3.17 | 0.79 | 5.98 | 7.48 | 0.75 |
| 20863 | 4" | 1.29 | 3.66 | 0.86 | 7.52 | 9.06 | 0.75 |

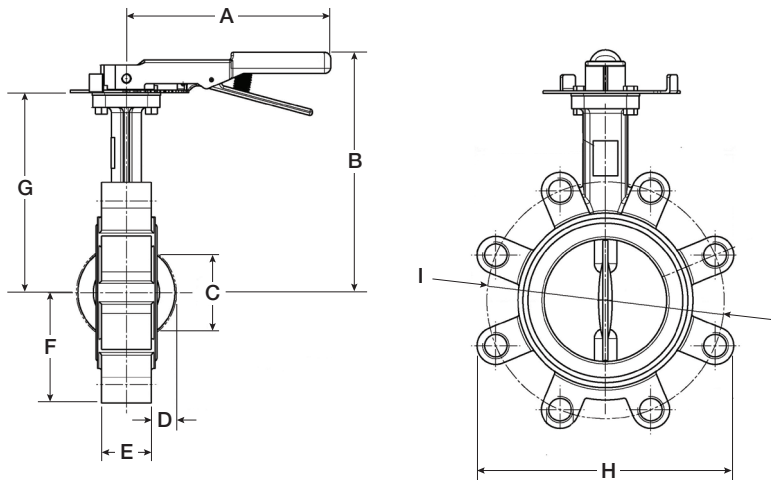
Dimensional Documentation

viega



Viega ProPress Butterfly Valve - Model 2873.81

| Part No. | Size | A (in) | B (in) | C (in) | D (in) | E (in) | F (in) | G (in) | H (in) | I (in) |
|----------|------|--------|--------|--------|--------|--------|--------|--------|--------|--------|
| 22074 | 2½" | 6.50 | 7.40 | 2.17 | 0.43 | 1.81 | 2.64 | 5.35 | 5.20 | 5.51 |
| 22075 | 3" | 7.28 | 7.64 | 2.80 | 0.67 | 1.81 | 2.82 | 5.59 | 7.01 | 5.98 |



Viega ProPress Butterfly Valve - Model 2873.81

| Part No. | Size | A (in) | B (in) | C (in) | D (in) | E (in) | F (in) | G (in) | H (in) | I (in) |
|----------|------|--------|--------|--------|--------|--------|--------|--------|--------|--------|
| 22076 | 4" | 9.06 | 8.47 | 3.54 | 0.91 | 2.05 | 3.62 | 6.42 | 8.27 | 7.48 |

This document subject to updates. For the most current Viega technical literature please visit www.viega.us.
Click Services -> Click Electronic Literature Downloads -> Select Product Line -> Select Desired Document

Viega LLC, 100 N. Broadway, 6th Floor • Wichita, KS 67202 • Ph: 800-976-9819 • Fax: 316-425-7618